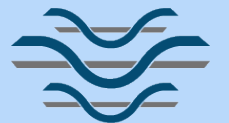




YEAR 7 MASTERY SHEETS

#TheLongdendaleLegacy



Longdendale
HIGH SCHOOL

Term 2 | English | Storytelling

Week 1

Question	Answer
What does 'origin' mean?	Origin refers to the beginning or source of something, often indicating where it started or was created.
What is oral storytelling and why was it an effective way to tell stories?	Oral storytelling is the tradition of telling stories aloud, and it was effective because it allowed for the sharing of culture, history, and values in an engaging, memorable way.
What is a moral in a story and why do they include this?	A moral in a story is a lesson or message about right and wrong, and it's included to teach values or guide the audience's behaviour.
What are the five sensory imagery terms?	Visual, Auditory, Tactile, Olfactory, Gustatory.
.Why would a writer use sensory imagery?	A writer uses sensory imagery to engage the reader's senses, create detailed experiences, and deepen emotional connections with the story

Week 2

Question	Answer
What is a myth and their importance?	A myth is a traditional story that explains natural phenomena, customs, or origins, and they were important for preserving cultural beliefs and understanding the world.
What is figurative language?	Figurative language is when writers use words or expressions in a non-literal way to create more vivid or imaginative meanings.
What is a metaphor?	A metaphor is a figure of speech that compares two things directly by saying one thing is another.
What is the effect of using a metaphor?	A metaphor helps us understand something better by comparing it to something else, making it more interesting and easier to imagine.
What are connotations?	Connotations are what we link, associate or connect to a word.

Week 3

Question	Answer
What is a simile?	A simile is a figure of speech that compares two things using "like" or "as"
What is the effect of using a simile?	A simile helps us understand something by comparing it to something else using "like" or "as," making the qualities easier to imagine.
What is personification?	Personification is when non-human things are given human qualities or characteristics
What is the effect of using personification?	Personification creates a sense of power and making them seem alive giving us a clear idea about their qualities.
What is the success criteria to use in an analysis paragraph?	Success Criteria: Point, quotes, explain, make deeper inferences, identify writer techniques, explain writers' intentions.

Week 4

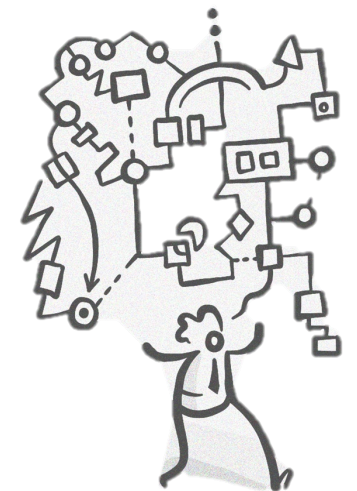
Question	Answer
What is anthropomorphism?	Anthropomorphism is giving human traits, emotions, or actions to animals or objects.
What is the effect of anthropomorphism?	Anthropomorphism helps readers relate and creates power within the characters.
What is characterisation?	Characterisation is the way a writer develops and describes a character's personality and traits.
What features does an epic hero and villain have?	An epic hero has great strength, bravery, and a sense of duty. A villain is often powerful, evil, and stands in the way of the hero's goals.
Why is it beneficial to write in third person to describe a character?	Writing in third person lets the reader see the character from different points of view

Week 5

Question	Answer
What do we mean by 'show' not 'tell' the reader?	" Show " means giving details through actions, thoughts, or dialogue, instead of directly stating information
What do we mean by creating impressions about a character for readers?	Creating impressions means using descriptions or behaviour to help readers form an idea of a character's personality.
What is a simple sentence and its effect?	Simple sentence is one main clause, therefore one idea and creates a clear, direct message.
What is a compound sentence and its effect?	Compound sentence: two main clauses, therefore two ideas, adding more detail and complexity.
.What is a complex sentence and its effect?	Complex sentence: one main idea / clause and subordinate clauses for extra information, making the sentence more detailed and thoughtful.

Week 6

Masters of recall
quiz



Term 2 | English | Storytelling

Week 1

Question	Answer
What is tension?	Tension is the feeling of worry, concern or stress about what will happen next.
What is suspense?	Suspense is the sense of excitement or worry about an upcoming event in a story.
What is the difference between tension and suspense?	The difference is that tension is the feeling of stress or worry, while suspense is the uncertainty or excitement about what will happen.
What is mood and atmosphere?	Mood and atmosphere refer to the feeling or emotion created in a story, like whether it feels happy, scary, or sad.
What is foreshadowing?	Foreshadowing is when hints or clues are given about what will happen later in a story.

Week 2

Question	Answer
What is withholding?	Withholding is when the author intentionally keeps information from the reader to create mystery.
What is vivid imagery?	Vivid imagery is when the author uses detailed descriptions to create strong pictures in the reader's mind.
What is an eerie setting?	An eerie setting is a place that feels spooky, strange, or unsettling.
What do we mean by slow pace in writing?	A slow pace in writing means the story moves slowly, with more time spent on details or building tension.
What is repetition?	Repetition is when words or phrases are repeated for emphasis or to create a pattern.

Week 3

Question	Answer
What do we mean when there is 'loss of control' for a character?	Loss of control for a character means they are unable to manage their actions or emotions, often leading to chaos or fear.
What do we mean by 'unexplained events' in a story?	Unexplained events in a story are things that happen without clear reasons, making the reader feel confused or curious.
What do we mean by 'isolation' in a story?	Isolation in a story refers to a character being alone or cut off from others, which can make them feel vulnerable or scared.
What is a cliffhanger?	A cliffhanger is when a story ends at a suspenseful moment, leaving the reader eager to know what happens next.
What is success criteria for writing an analytical paragraph?	S1: Point; S2: Quote(s); S3: Devices; S4: Explain; S5: Tentative Language to explore; S6: Impact on readers; S7: Word analysis; S8: Authorial intent.

Week 4

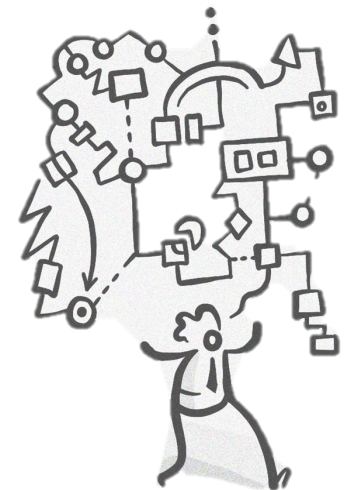
Question	Answer
What is non-fiction?	Non-fiction is writing that is based on real facts, events, or people.
What is perspective in writing?	Perspective in writing is the point of view from which the story or information is told.
What is format?	Format refers to the type of text.
How can non-fiction create tension and suspense?	Non-fiction can create tension and suspense by describing dangerous or uncertain situations in vivid detail, making the reader feel on edge.
What is a memoir?	A memoir is a true story based on an experience of the writer.

Week 5

Question	Answer
What do we mean by emulate a writer?	To emulate a writer means to try to copy their style or writing techniques.
What does vocabulary mean?	Vocabulary refers to the words that make up a language or the words a person knows and uses.
What do we mean by the tone of a text?	The tone of a text is the attitude or feeling the writer conveys through their choice of words and writing style.
What is the success criteria for writing?	S1: Establish authorial intent; S2: Tone for purpose, audience and format; S3: Paragraphs; S4: Ideas in detail; S5: Language devices; S6: Appropriate vocabulary; S7: Sentence types; S8: Accurate punctuation.

Week 6

Masters of recall quiz



Topic FDP, Addition and Subtraction | Maths |

Week 1

Question	Answer
1) Can you write a tenth as a fraction?	1/10
2) Can you write one hundredth as a fraction?	1/100
3) How would you know what the denominator of a thousandth would be using the answers above?	It will be a thousand.
3) Can you write a tenth as a decimal?	0.1
4) Can you write one hundredth as a decimal?	0.01

Week 2

Question	Answer
1) What are percentages always out of?	100
2) How would I convert a fraction to a percentage?	Convert the denominator so it is out of 100.
3) How many 5th are there in a whole 1?	5
4) How many 8ths are there in a whole 1?	8
.5) How many degrees are there in a full circle?	360

Week 3

Question	Answer
1) What does equivalent mean?	Two things that are different but represent the same amount.
2) How would I find an equivalent fraction?	We would multiply/divide the numerator and denominator by the same number.
3) What operation does a fraction represent?	Divide
4) What kind of a fraction is 5/4?	Improper fraction
5) How would we describe this number 1 2/3?	Mixed Number

Week 4

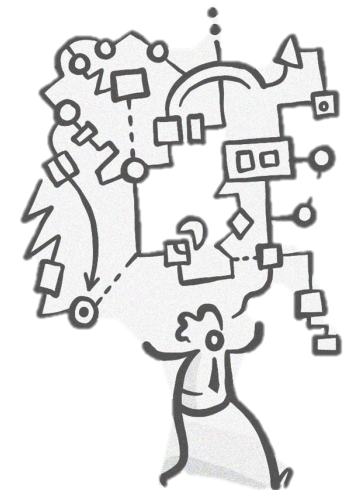
Question	Answer
1) Can you list the number bonds for 10?	0 and 10, 1 and 9, 2 and 8, 3 and 7, 4 and 6, 5 and 5
2) Can you describe your method for adding together 634 + 261?	Column Method – align the ones, tens and hundreds column and add each one, where the addition goes above 10 we must carry this over into the next column.
3) What is an integer?	A whole Number
4) Can you describe your method for subtracting two numbers?	Column Method – align the ones, tens and hundreds column and subtract each one, if the subtraction gives a negative answer we must take 1 from the column to the left so we can have a positive solution.

Week 5

Question	Answer
1) What is the perimeter of a shape?	The distance around the outside.
2) What does it mean if something is credited into a bank account?	Something is being added in for example wages.
3) What does it mean if something is debited from a bank account?	Something is being taken out for example bills.
4) Can you define profit?	The money that is made by a business once the costs have been taken away.
.5) Can you define frequency?	How often something appears.

Week 6

Masters of recall quiz



Topic Multiplication and Division, Fractions of amounts, Directed number | Maths |

Week 1

Question	Answer
Which numbers have an odd amount of factors?	Square numbers
Why is dividing by 10 and then by 10 again the same as dividing by 100?	Because $10 \times 10 = 100$
What decimal is the same as $\frac{1}{10}$?	0.1
How do you find one tenth of a number?	Divide by 10 or Multiply by 0.1
When does multiplication make an original number smaller?	When you multiply by a decimal less than one. E.G $\times 0.1$

Week 2

Question	Answer
Define quotient	A result obtained by dividing one amount by another
To divide by 18 we can divide by 6 and then by 3. Why?	Because $6 \times 3 = 18$
How do you know 341 divided by 2 will not have an integer answer?	Because it is an odd number
How do you calculate the area of a rectangle?	Length \times Width
How do you calculate the perimeter of any shape?	Add all it's sides together

Week 3

Question	Answer
What is meant by perpendicular height?	Vertical height from top to bottom where the base meets the height at 90 degrees
What is the formula for finding the area of a trapezium?	$\frac{1}{2} (a + b) h$
If you know the mean for a set of numbers, how do you find their total?	Multiply the mean by how many numbers there are.
Why do we write $a \times 2$ as $2a$ instead of a^2 ?	The coefficient is always written in front of the variable.
Give another type of average other than mean	Median, Mode or Range

Week 4

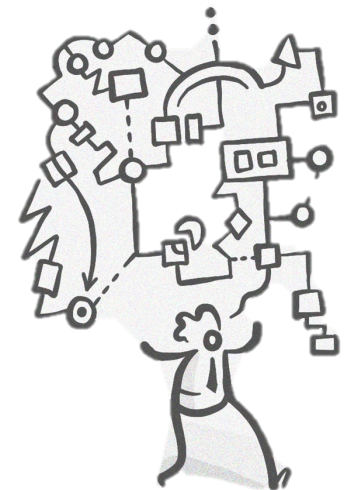
Question	Answer
How do you work out $\frac{3}{5}$ of a number?	Divide by 5 and then multiply by 3
How can I work out a number if I know a fraction of the number?	Draw a bar and fill in the parts you know, then fill in each box to get a total
How many boxes would a bar be split into for sevenths?	7
If you knew 50% of a number how could you find 100%?	Double it
How do you calculate 10% of an amount?	Divide by 10

Week 5

Question	Answer
How far is -3 from 0?	3
Which is a colder temperature -4 or -10b degrees?	-10
What is a zero pair?	A pair of numbers that add together to zero. E.g -2 and 2
What are consecutive integers?	Whole numbers one after the other. E.g. 11, 12, 13
Between which two consecutive integers does -1.5 lie?	-2 and -1

Week 6

Masters of recall quiz



Topic Tissues and organs, and Atoms, elements and compounds | Science |

Week 1

Question	Answer
What is the role of the musculoskeletal system?	The musculoskeletal system is made up of bones, muscles and other connective tissue.
What are the functions of the skeleton?	To support the body and give it shape, to protect the internal organs, to allow body movements and to produce blood cells.
What is the function of the muscles?	To allow movement by contracting and relaxing.
What are the units of force?	Newtons
What piece of equipment is used to measure force?	Newton-metre

Week 2

Question	Answer
What is the independent variable?	The thing that scientists change, to look at the effect of the changes.
What is the dependent variable?	The thing that scientists measure, to look at what happened as a result of changing the independent variable.
What are the control variables?	Variables that need to be kept the same, so that scientists know any effects on the dependent variable are caused by the independent variable.
What is the role of the respiratory system?	Our respiratory system allows air to move into and out of the lungs through the nose and mouth.
.What is the role of the diaphragm?	The diaphragm can contract and relax to change the size of the chest cavity where the lungs are.

Week 3

Question	Answer
What is found between the ribs?	The ribs have intercostal muscles between them.
Where does gas exchange take place?	In the alveolus.
Identify four adaptations of the alveolus?	Thin walls, good blood supply, moist and many small alveolus to increase the surface area.
Define diffusion?	Where particles move from an area of high to an area of low concentration.
What is a drug?	Chemical substance that has an effect on the body.

Week 4

Question	Answer
What is a medicine?	A drug taken to treat an illness is called a medicine.
What is a recreational drug?	Recreational drugs are taken by people for enjoyment. They can often be addictive.
What is organ donation?	Organ donation is the act of giving an organ to someone else to save or improve their life.
What is an element?	A substance made up of only one type of atom.
Where can you find information about each element?	The Periodic table

Week 5

Question	Answer
What is an atom?	The smallest part of an element that can exist.
What is a chemical symbol?	A letter or letters used to represent a chemical element.
What are periods on the Periodic table?	Periods are horizontal rows.
What are groups on the Periodic table?	Groups are columns.
.Describe the difference between an atom and an element.	An atom is the smallest part of an element whereas elements are made up of atoms.

Week 6

Masters of recall quiz



Topic Atoms, elements and compounds and Energy transfers | Science |

Week 1

Question	Answer
What is a physical property?	Is a characteristic of a substance that can be observed at any time.
What is a chemical property?	Is a characteristic of a substance observed during a reaction.
State some properties of metals?	Sonorous, malleable, ductile, conductors of heat, conductors of electricity, some metals have magnetic properties
What does sonorous mean? What does ductile mean?	Sonorous means it makes a ringing sound when hit and ductile means it can be drawn into wires.
.State some properties of non-metals?	Poor conductors (insulators) of heat, poor conductors (insulators) of electricity, brittle and not strong,

Week 2

Question	Answer
What is a compound?	A substance that contains two or more elements chemically bonded together.
What are word equations?	Away of representing a chemical reaction simply. The reactants are on the left of an arrow and the products are on the right.
What does mono, di and tri stand for?	Mono = one, di = two, tri = three.
What is a molecule?	A small group of non-metal atoms (two or more) chemically joined together.
What is a chemical formulae?	Shows the relative number of atoms of each element in a compound/molecule.

Week 3

Question	Answer
On chemical formulae what does the subscript (small number) tell us?	The small number (subscript) tells us the number of atoms.
What is the SI unit for energy?	Energy is measured in Joules (J).
How many Joules are in one kilojoule?	1000 Joules = 1 kilojoule
How many Joules are in a megajoule?	1000 000 Joules = 1 megajoule
How would you convert Joules into kilojoules?	To go from Joules to kilojoules you divide by 1000.

Week 4

Question	Answer
How would you convert from kilojoules into Joules?	To go from kilojoules to Joules you x 1000.
How would you convert from kilojoules into megajoules?	To go from kilojoules to megajoules you divide by 1000.
How would you convert from kilojoules into megajoules?	To go from kilojoules to megajoules you x 1000.
What are the SI units of mass?	The units for mass are grams (g) and kilograms (kg)
.What are the SI units of weight?	The units for weight are Newtons (N).

Week 5

Question	Answer
State the four ways energy is transferred?	Electricity, heating, mechanically and radiation
State some of the energy stores?	Thermal, kinetic, elastic potential, gravitational potential and chemical
What is a hazard? What is a precaution?	A hazard is a thing or situation that presents a threat to people. The risk is how likely something is to be harmful.
What is the efficiency equation?	Efficiency = $\frac{\text{useful energy output}}{\text{total energy input}} \times 100$
What is accuracy? What is precision?	Accurate results are results that are close to the true value. Precise results are where there is very little spread about the mean value.

Week 6

Masters of recall quiz




Topic 2 Aztec Pattern | Art |


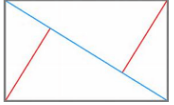

Week 1

Question	Answer
What is the definition of a pattern in Art?	A repeated decorative design based on shapes
What do you need to consider when planning a drawing of a title?	Size of the letters, position of the words, font type, spelling, proportion, space inside letters
What will make your title stand out?	Solid letters, bold application of colour, in contrast to the background

Week 2

Question	Answer
What is an Aztec pattern?	Tribal inspired patterns from Mexico. Which include stripes, polka dots and chevrons in geometric designs
What is the name of the artist we are studying?	Kris Tate
Name 3 patterns that you can see in her artwork 	Triangles, chevrons, stripes, diamonds

Week 3

Question	Answer
What is the definition of a composition in art?	The arrangement of elements within a piece of art
How can you make a composition balanced?	Arranging positive elements and negative space so that no one area overpowers the other.
Which of these two compositions would be effective in an artist research page? 	<div style="display: flex; justify-content: space-around;"> <div style="text-align: center;">  Diagonal The diagonal </div> <div style="text-align: center;">  S Shape </div> </div>

Week 4

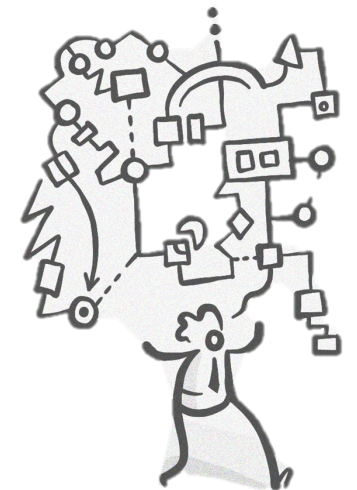
Question	Answer
What imagery does Kris Tate include in her work along with the patterns?	Animals and people
Where does she get the inspiration for her images?	Her native culture and the animals of Guatemala
Which colours does she use in her work?	Black, white, browns and vivid colours, such as turquoise, pink, green, orange red and yellow.

Week 5

Question	Answer
What 5 things do you need to have included on your Research Page?	<ol style="list-style-type: none"> 1.You have created an appealing composition and used your space well 2.You have included a range of relevant text and styles 3.You have neatly applied your chosen images 4.You have included colour within your work 5.Have you carefully created a simple study of the artist's work

Week 6

Masters of recall quiz



Topic 2 Aztec Patterns | Art |

Week 1

Question	Answer
What 5 things do we need to have included on your Research Page?	<ol style="list-style-type: none"> 1.You have created an appealing composition and used your space well 2.You have included a range of relevant text and styles 3.You have neatly applied your chosen images 4.You have included colour within your work 5.Have you carefully created a simple study of the artist work

Week 2

Question	Answer
What is sgraffito?	It is an artistic technique derived from the Italian word 'graffiare' meaning to scratch
Where was sgraffito first used?	It was used on the exterior of buildings to create detailed frescoes
Which famous artist used sgraffito on buildings in Rome during the Renaissance times?	Caravaggio

Week 3

Question	Answer
Aztec designs were created in Mexico, where is this country located?	Central America
Describe an Aztec design?	An Aztec pattern includes various geometric shapes, and they often include religious imagery, animals and plants
What did the Aztecs decorate with patterns?	Jewellery, shields, pottery, statues and mosaics

Week 4

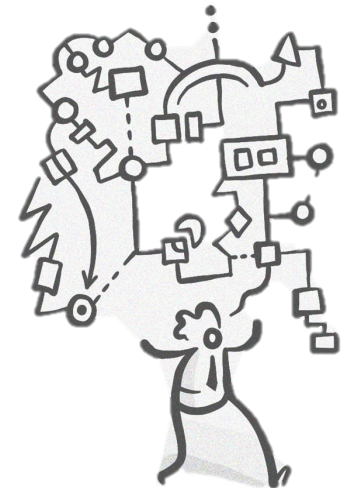
Question	Answer
What is a collage?	Applying cut out materials to a page to create an image
Where is the word collage derived from?	From the French word 'coller', which means to glue or to stick together
Which elements do you need to consider when creating a Kris Tate inspired collage?	Shapes including triangles, chevrons, stripes and diamonds. Colours including black, white, browns and vivid colours. A composition which is carefully arranged into rows. Layers of shapes in different colours

Week 5

Question	Answer
Give the definition of a geometric shape.	Geometric shapes are shapes made from points and lines. These shapes are the opposite of organic shapes. While geometric shapes are more precise and mathematical, organic shapes are natural
How were geometric shapes used in Aztec patterns?	They were often rectangular, triangular and circular recurring in long symmetrical lines
Name three things that you could you decorate with geometric patterns ?	Wallpaper, bags, duvet covers, cushions, clothing, canvas, phone case, notebook, pencil case.

Week 6

Masters of recall quiz



Spreadsheets | Computing |





Week 1

Question	Answer
What is a worksheet in a spreadsheet?	This is where you enter the data and work out the calculations.
What is a column?	These are identified by letter and go down the way
What is a row?	These are identified by a letter and go across the way
What is a cell?	The highlighted box that is uniquely identified by its cell reference
.	


Week 2

Question	Answer
In a cell reference does the number or letter come first?	The letter
What is the adding symbol in spreadsheets?	+
What is the subtraction symbol in spreadsheets?	-
What is the multiplying symbol in spreadsheets?	*
What is the dividing symbol in spreadsheets?	/

Week 3

Question	Answer
What must always start a formula in spreadsheets with what?	=
What does this symbol do? 	Changes the fill of the cell
What does this symbol do? 	Changes the colour of the text
What does this symbol do? 	Puts a boarder around the cells
.What does this symbol do? 	Merge and Centre

Week 4

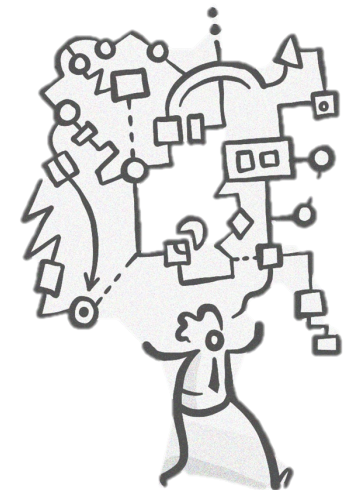
Question	Answer
What does this symbol do? 	Decreases the decimal point
What does the SUM function do?	Add the contents of the cells selected
What does the Average function do?	Finds Average of the cells selected
What does the Max function do?	Finds the largest value of the cell selected
.What does the Min function do?	Finds the smallest value of the cells selected

Week 5

Question	Answer
What does sorting the data do?	Puts the data in order either alphabetically or numerically
What does filtering the data do?	Temporarily removing some of the rows of data that don't meet a certain criteria.
What tab do you select in order to sort and filter?	Data

Week 6

Masters of recall quiz



Topic Computational Thinking | Computing |

Week 1

Question	Answer
What is meant by Computational thinking?	Computational thinking allows us to take a complex problem, understand what the problem is and develop possible solutions
What are the 4 corner stones of Computational thinking?	A sequence of steps that solve a problem
What is decomposition?	Breaking down a complex problem or system into smaller, more manageable parts
What is iteration	When instructions are repeated


Week 2

Question	Answer
What is abstraction	Selecting the important information and ignoring the rest
What is an algorithm?	developing a step-by-step solution to the problem, or the rules to follow to solve the problem
What is selection?	An action taken dependent on the answer to a question
What is pattern recognition	looking for similarities among and within problems




Week 3

Question	Answer
What is Boolean?	A result that can only have one of 2 values: True or False
What are the Boolean logic operators?	AND, OR, NOT

Week 4

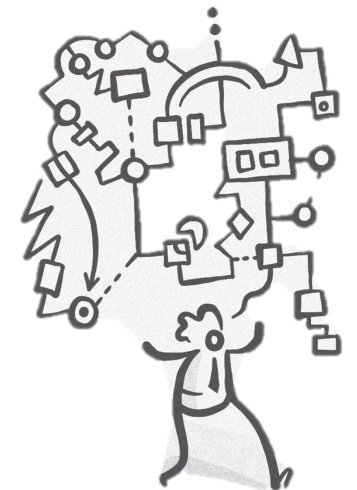
Question	Answer
What is a sequence	The order the instructions go in
What is an input?	The data that is usually inputted by the user
What is an output?	The data that is displayed to the user
What does this symbol do 	The start and end of an algorithm

Week 5

Question	Answer
What does this symbol do? 	Shows when a decision is made?
What does this symbol do? 	Indicates when a process occurs
What does this symbol do? 	Shows the direction the data is flowing in

Week 6

Masters of recall quiz



Topic 3 Oliver Twist | Drama |

Week 1

Question	Answer
What does a criminal character mean?	Character who breaks the law.
Who are the criminal roles?	Fagin and Bill Sikes
Who does Bill live with?	Nancy
Where does Nancy work?	In the pub

Week 2

Question	Answer
Who does Oliver live with after the books are stolen?	Mr Brownlow
What is Mr Brownlow's daughter called?	Rose
What was Oliver left with when he is born from his mother?	A locket
What does Nancy agree to do for Mr Brownlow?	Give Oliver back.

Week 3

Question	Answer
What is the social class of Bill Sikes?	Lower class criminal
What does Bill get Oliver to do?	Burgle a house.
What does Bill do to Nancy?	Murders her.
Who does Dodger live with?	Fagin and the boys.

Week 4

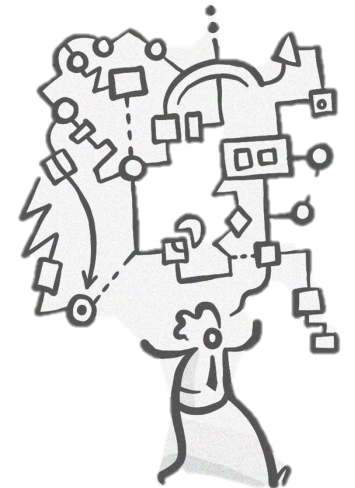
Question	Answer
What accent does Dodger use?	Cockney
What social class is Dodger?	Lower class
Which UK city is the play set?	London
What is Dodger role?	Pick pocket
What is a monologue?	One person piece of drama

Week 5

Question	Answer
Name 2 rehearsal techniques?	Hot-seating Role on the wall
What is a costume?	Clothes actors wear
Name 3 lights.	Spot-light, fresnels, parcans
When was the play written Oliver Twist?	1837

Week 6

Masters of recall
quiz



Topic 4 Cultural Drama | Drama |

Week 1

Question	Answer
What does culture mean?	Traditions of a country
Where did drama begin?	Greece
What style of drama focuses on religious plays?	Medieval and mystery plays
What style of drama used stock characters?	Melodrama

Week 2

Question	Answer
What are Greek stories called which are passed down?	Myths
What is the name of group of actors in Greek plays?	Chorus
Who were Greek plays performed for?	In honour of the gods
What was the name of the Greek leader of gods?	Zeus

Week 3

Question	Answer
Which style of theatre is lifelike and realistic?	Naturalism.
What did Greek actors wear on their face?	Masks.
What is a Greek theatre called?	An Amphitheatre.
What are the three styles of medieval theatre?	The Mystery Play, the Miracle Play and the Morality Play.

Week 4

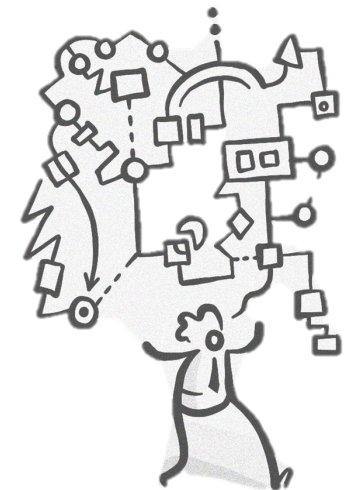
Question	Answer
Where does Commedia Dell'arte come from?	Italy.
What style of theatre often watched at Christmas did it inspire?	Pantomime.
What genre of theatre is Commedia Dell'arte?	Comedy.
What are the type of characters used in Pantomime?	Stock characters.
What do most Commedia characters wear?	Masks.

Week 5

Question	Answer
Which style of theatre relies on movement to tell a story?	Physical theatre.
Which famous physical theatre company have we explored?	Frantic Assembly.
What does contemporary mean?	That something is modern, current and happening now.
What is a chair duet?	A technique used by Frantic Assembly using 2 chairs to create a sequence of movement.
What is the spoken language of characters called?	Dialogue.

Week 6

Masters of recall quiz



Distinctive Landscapes | Geography |

Week 1

Question	Answer
What is freeze thaw weathering?	Freeze-thaw weathering happens when water freezes in the crack of a rock which causes it to expand. The repeated freezing and thawing eventually leads to the rock breaking apart.
What is biological weathering?	Biological weathering can happen when vegetation roots grows into the rocks and breaks it apart.
What is chemical weathering?	Chemical weathering happens when acid rain lands on rocks, slowly dissolving them.
What is hydraulic action?	Hydraulic action occurs when the sheer force of the water pushes into the cracks of the rock and breaks it apart over time.
What is abrasion?	Abrasion occurs when rock fragments scrape against the rock wearing it away.
What is solution?	Solution occurs when specific rocks react with the weak acidity of the water causing them to wear away over time.

Week 2

Question	Answer
What is a beach?	A beach is a narrow, gently sloping strip of land that lies along the edge of an ocean, lake, or river.
What is a discordant coastline?	A discordant coastline occurs where bands of different rock type run perpendicular to the coast.
What is concordant coastline?	A concordant coastline occurs where the same rock runs along the length of the coast.
What is a gorge?	A gorge is a narrow valley between hills or mountains, typically with steep rocky walls and a stream running through it.
What are moraine?	Moraine is a mass of rocks and sediment carried down and deposited by a glacier, typically as ridges at its edges or extremity.

Week 3

Question	Answer
What is urbanisation?	Urbanisation is the increase in the proportion (percentage) of people living in towns and cities.
What are rural areas?	Rural areas are characterised by low densities of buildings and population, found on the edge of towns and cities.
What is infrastructure?	Infrastructure the structures, systems and facilities that improve the quality of life and economy within an area.

Week 4

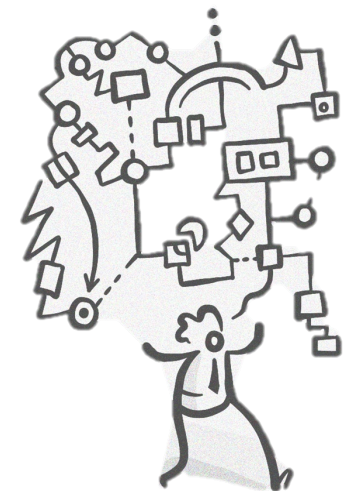
Question	Answer
What is a stakeholder?	A stakeholder is someone who has a real interest in a social issue or in the formation or removal of a public policy.
What do we mean by conflict?	A conflict is a serious disagreement or argument.
What are environmentalists?	An environmentalist is a person who is concerned about protecting the environment.
What is a tourist?	A tourist is a person who is visiting a place for pleasure and interest.
What is resident?	A resident a person who lives somewhere permanently or on a long-term basis.

Week 5

Question	Answer
What is soft engineering?	Soft engineering is a sustainable and natural approach to managing flood risk.
What is hard engineering?	Hard engineering involves building artificial structures which try to control natural processes.
What is afforestation?	Afforestation involves the planting of trees in a drainage basin to increase interception and storage while reducing surface run off.
What is channel straightening?	Channel Straightening involves blocking off meanders and constructing alternate, straighter routes across meanders, the river starts to flow faster. This moves water through the river faster preventing it from pooling and so reducing the risk of a flood.

Week 6

Masters of recall quiz



World Cities | Geography I

Week 1

Question	Answer
What is urbanisation?	The increase in the proportion of people living in urban areas.
What is urban growth?	The rate at which the population of an urban area increases.
What is horizontal spread?	At or near the city edge, the city can add land area through extensive growth.
What is infill development?	Inside the city edge, the city can add built cover by filling in green or “brown” land with structures— or (less frequently) it can replace old structures with new ones.
.What is vertical layering?	The city can increase its floor-area ratio—available floor space per unit of land area—by building taller structures, thus fitting more total floor space onto the same amount of land.

Week 2

Question	Answer
What is an expansive population pyramid?	Expansive population pyramids are used to describe populations that are young and growing. They are often characterized by their typical ‘pyramid’ shape, which has a broad base and narrow top.
What is a constrictive population pyramid?	Constrictive population pyramids are used to describe populations that are elderly and shrinking.
What is a stationary population pyramid?	Stationary population pyramids are used to describe populations that are not growing. They are characterized by their rectangular shape, displaying somewhat equal percentages across age cohorts that taper off toward the top.
What is demography?	Demography is the statistical study of human populations. Demography examines the size, structure, and movements of populations over space and time.

Week 3

Question	Answer
What is sustainability?	Sustainability is meeting the needs of the present without compromising the ability of future generations to meet their own needs.
What is sanitation?	Sanitation is conditions relating to public health, especially the provision of clean drinking water and adequate sewage disposal.
Who are the under-served?	An urban dweller living in inadequate housing or an under served area of the city, with limited access to water, sanitation, transport and energy.
Who ae the better-served?	An urban dweller living in good quality housing or a better served area of the city, with reliable, affordable and safe access to water, sanitation, transport and energy.

Week 4

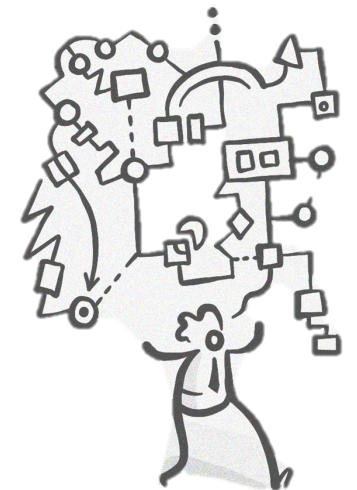
Question	Answer
What is PM2.5?	Particulate matter consisting of fine aerosol particles measuring 2.5 microns or smaller in diameter
What is urbanisation?	The increase in the proportion of people living in urban areas.
What is urban growth?	The rate at which the population of an urban area increases.
What is demography?	Demography is the statistical study of human populations. Demography examines the size, structure, and movements of populations over space and time.

Week 5

Question	Answer
What is sustainability?	Sustainability is meeting the needs of the present without compromising the ability of future generations to meet their own needs.
What is infrastructure?	The basic facilities and system serving a country, region, or community such as roads, railways, telecommunications.
What is biophilic design?	An approach to architecture that seeks to connect building occupants more closely to nature.
What is biodiversity?	The biological variety and variability of life on earth.

Week 6

Masters of recall quiz



Topic 3 How did a Frenchman control England? | History |

Week 1

Question	Answer
What is an heir?	A person who will inherit the money or power of someone else when they die.
Who was England's King at the start of 1066?	Edward the Confessor
Who was Harold Godwinson married to?	Edward the Confessor's sister
Where was William from?	Normandy (in modern France)
Which claimant to the throne of England was a Viking?	Harald Hardrada.

Week 2

Question	Answer
What was the first battle of 1066?	The Battle of Stamford Bridge.
Who did Harold Godwinson defeat at Stamford Bridge?	Harald Hardrada
Why didn't William invade England sooner?	The wind was blowing in the wrong direction.
Who fought at the Battle of Hastings?	William of Normandy & Harold Godwinson.
Who won the Battle of Hastings?	William of Normandy

Week 3

Question	Answer
What is a "shield wall"?	A protective wall formed by interlocking the shields of foot soldiers.
What is a retreat?	Movement by soldiers away from an enemy.
Why did the Northern Earls revolt against William?	William took their land away and replaced the Earl of Northumbria with Robert Cumin.
What does the word "harrying" mean?	To harass or continually attack an enemy
How many died because of the harrying of the North?	100,000

Week 4

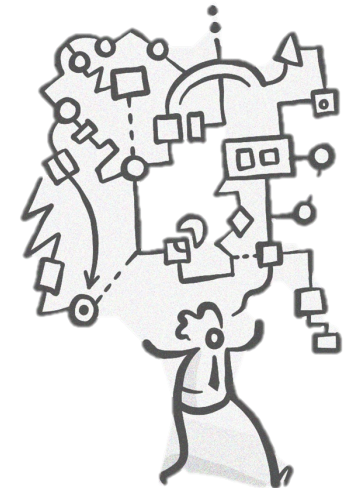
Question	Answer
What is a "motte"?	A hill or defensive mound of earth.
What is a "bailey"?	A large walled area around the motte.
Which is the safest place in a castle?	The keep.
Who was the most powerful person in the feudal system?	The King
What did barons do for the king in exchange for their land?	Swear loyalty to the king and give him knights to fight in his army.

Week 5

Question	Answer
What had the least power in the feudal system?	The peasants.
What was the Domesday Book?	A survey of who held the land in England.
Why did William want to know who owned the land?	So that he could make them pay tax.
What language is the Domesday book written in?	Latin
In the Domesday Book, which of William's supporters owned Longdendale?	William Peverel

Week 6

Masters of recall quiz



Topic 3 Who was more important, the Church or the King? | History

Week 1

Question	Answer
What are doom paintings?	Pictures displayed in church showing heaven and hell.
What was the only religion in England during the Middle Ages?	Catholicism.
During the Middle Ages, what language were church services spoken in?	Latin.
What were used to help people understand church services?	Paintings and Statues.
Why was the church powerful in Medieval times?	It was rich and it told people how to get to heaven.

Week 2

Question	Answer
Who was in charge of the church in Europe?	The Pope.
What is a priest?	A man in charge of religious ceremonies in a village.
Other than Sunday Service, what jobs would the village priest do?	Perform weddings, baptisms, heal the sick, bury the dead etc.
What percentage of income did everyone give to the church in the Middle Ages?	10%.
What is a Cathedral?	A large and important church.
What is an Archbishop?	An important person in the Church, below the Pope but above priests.

Week 3

Question	Answer
Who was the King of England in 1154?	Henry II.
What job did Henry give Thomas Beckett in the church?	Archbishop of Canterbury.
Who killed Thomas Beckett?	Four Knights.
Where was Thomas Beckett killed?	Canterbury Cathedral.
When was Beckett murdered?	29 December 1170.
What is a Martyr?	Someone who is killed or dies for their beliefs.

Week 4

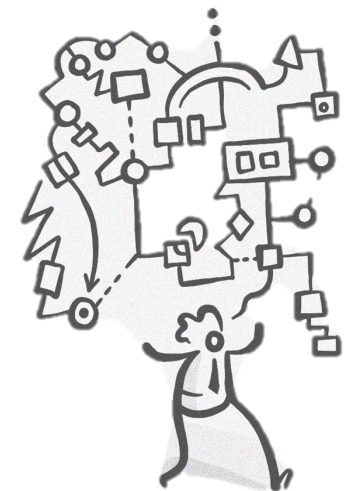
Question	Answer
Who became King of England in 1199?	King John.
Why was King John nicknamed 'Softsword'?	Because he lost so many battles.
Why were the barons angry at John?	He insulted them, sent them abroad, punished them with fines, and made them pay big taxes.
What was the 'Magna Carta'?	A document that sets out rules for Kings to follow.

Week 5

Question	Answer
What year was King John forced to sign the Magna Carta?	1215.
What do the words Magna Carta mean?	'The Great Charter'.
What changes did the Magna Carta bring?	The King cannot interfere with the church, stop unfair taxes and the right to a fair trial.
What is an 'interpretation'?	An opinion or version of past events, based on evidence.

Week 6

Masters of recall quiz



Topic 3 What's That Sound? | Music |

Week 1

Question	Answer
What does DYNAMICS mean in music?	The volume of the music
What does PITCH mean in music?	How high or low a sound is
Identify these drink rhythms:	1 = tea. 2 = coffee. 3 = coca cola



Week 2

Question	Answer
What are the FOUR families of instruments in music?	Brass, strings, woodwind and percussion
What does PITCH mean in music?	How high or low a sound is
What does DYNAMICS mean in music?	The volume of the music
Which stringed instrument plays the highest?	Violin
Which stringed instrument plays the lowest?	Double bass

Week 3

Question	Answer
What does TEMPO mean in music?	The speed of the music
Name the FOUR main brass instruments of the orchestra.	Trumpet, French horn, trombone and tuba
Which brass instrument plays the highest?	Trumpet
Which brass instrument plays the lowest?	Tuba
Name the FOUR main stringed instruments of the orchestra.	Violin, viola, cello and double bass

Week 4

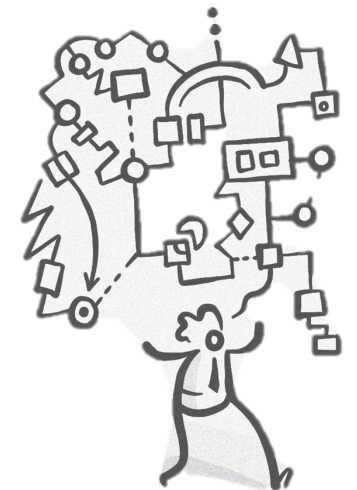
Question	Answer
Find the missing word: A reed _____ to make the sound in a woodwind instrument.	Vibrates
Which woodwind instrument plays the lowest?	Bassoon
Which woodwind instrument plays the highest?	Flute
Which woodwind instrument does NOT use a reed?	Flute
The bassoon is a double reed instrument. Name another double reed instrument.	Oboe

Week 5

Question	Answer
If you hit or shake an instrument, in which family does it belong?	Percussion
Find the missing word: The drum with the rattling wires underneath is the _____ drum.	Snare drum
The glockenspiel is made of what material?	Metal
The xylophone is made of what material?	Wood
What is another name for the timpani drum?	Kettle drum

Week 6

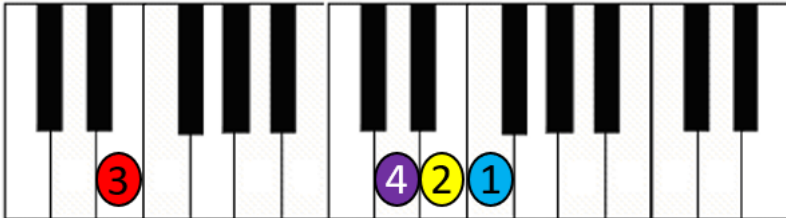
Masters of recall quiz



Topic 4 Filling it Out | Music |

Week 1

Question	Answer
What is the word for when you press three keys at once on the keyboard?	Chord
What equipment do you need when setting up a keyboard?	Keyboard, plug, splitter, headphones and a music stand.
What word is spelt out below?	FEED



Week 2

Question	Answer
If I press C, E and G at the same time, what am I playing?	C chord
If I press F, A and C at the same time, what am I playing?	F chord
Which THREE chords did we use to play the 12-bar blues?	C F G
What is the proper name for the mouth organ?	Harmonica

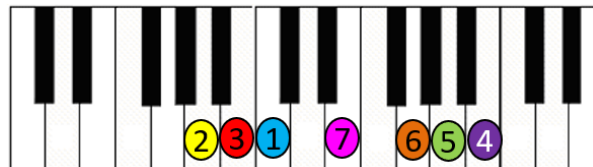
Week 3

Question	Answer												
Identify the missing chords in the 12-bar blues.	<table border="1" style="background-color: #f4a460; text-align: center;"> <tr> <td>C</td> <td>C</td> <td>1</td> <td>C</td> </tr> <tr> <td>F</td> <td>2</td> <td>C</td> <td>C</td> </tr> <tr> <td>3</td> <td>F</td> <td>C</td> <td>C</td> </tr> </table>	C	C	1	C	F	2	C	C	3	F	C	C
C	C	1	C										
F	2	C	C										
3	F	C	C										
Name the main instruments used in blues music.	Electric guitar, bass guitar, drum kit, vocals, piano/keyboard, harmonica, saxophone.												
From which country does blues music originate?	USA												
What is this rhythm that we have been using to play blues music?	Brandy												



Week 4

Question	Answer
What is the musical word for making up music on the spot?	Improvising
Name a blues artist we have listened to.	Iza. Muddy Waters. Howlin Wolf. Tender Slim.
What word is spelt out below?	CABBAGE



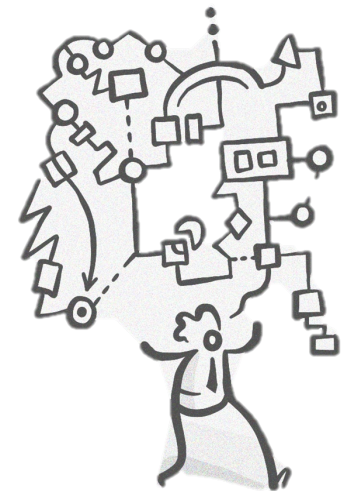
Week 5

Question	Answer																								
Which chords are missing?	<table border="1"> <tr> <td>?</td><td>///</td> <td>?</td><td>///</td> <td>?</td><td>///</td> <td>?</td><td>///</td> </tr> <tr> <td>?</td><td>///</td> <td>?</td><td>///</td> <td>?</td><td>///</td> <td>?</td><td>///</td> </tr> <tr> <td>?</td><td>///</td> <td>?</td><td>///</td> <td>?</td><td>///</td> <td>?</td><td>///</td> </tr> </table>	?	///	?	///	?	///	?	///	?	///	?	///	?	///	?	///	?	///	?	///	?	///	?	///
?	///	?	///	?	///	?	///																		
?	///	?	///	?	///	?	///																		
?	///	?	///	?	///	?	///																		
What THREE notes do I need to press to play a G chord?	G, B and D																								
Identify this chord:	F chord																								



Week 6

Masters of recall quiz



Topic Rules, Strategies and Tactics Pillar 2 | PE |

Week 1

Question	Answer
What are rules in sport ?	Rules are publicly agreed upon sets of principles, policies, criteria, descriptions and conducts of a sport or physical activity for reasons of safety, sportsmanship, equipment or facility design, and competitiveness.
What are strategies in sport ?	The numerous sets of methods applied in various sports in order to find ways and create advantageous methods for achieving an outcome
What are tactics in sport ?	Tactical skills are strategic mental abilities that successful athletes use to win games and competitions

Week 2

Question	Answer
Define competitive sport	A form of sport based upon competition, in which it is recognised that opponents' performances are judged in relation to each other.
Why are rules important in sports ?	They ensure fair play, provide structure and protect the safety if the players.
How do sports rules contribute to fair competition ?	Create a level playing field, ensure all follow the same guidelines so that it is fair and equal.

Week 3

Question	Answer
Why are rules important to safety ?	Minimise the risk of injury by limiting dangerous actions and outlining safety practises.
Can understanding rules improve a player's performance ?	Yes- they can make better decisions, avoid penalties and exploit opportunities within the guidelines.
How do rules impact on the enjoyment of sport ?	They maintain order and fairness which enhance the enjoyment and the players and spectators.

Week 4

Question	Answer
Who enforces rules within a game or competitive sport situation ?	Officials, umpires, referees
Why is it important for officials to understand the rules ?	To thoroughly enforce them properly, make fair decisions and maintain the integrity of the game.
What happens if players do not follow the rules in sport ?	Receive penalties such as free throws, point deductions or ejections from the game which can affect the team's overall performance.

Week 5

Question	Answer
What is sport integrity ?	Integrity is the foundation upon which sport is built. Demonstrating conduct that is honest and ethical; providing safe, fair and inclusive opportunities.
What is sportsmanship ?	Sportsmanship means playing within the rules and understanding and using sports etiquette. It is playing fairly in the spirit of the game, showing respect .
How do rules in sports promote sportsmanship?	Establish acceptable behavior and encourage respect for oponents , officials and the game.

Week 6

Masters of recall
quiz



Topic Rules, Strategies and Tactics Pillar 2 | PE |

Week 1

Question	Answer
Where can the ball hit the opponent in dodgeball ?	Below the shoulder, no head shots
What are the rules about the boundaries in dodgeball ?	Remain within the boundaries of the court, play in front of the red line, do not cross to opponents' side
What is an illegal throw in dodgeball ?	A player must never throw if they are out and only throw if still in play.

Week 2

Question	Answer
How many players and teams play in a full game of football ?	Two teams with 11 players.
Who can handle the ball in Football ?	The goalkeeper, within the penalty area surrounding the goal.
How long does a match game last ?	Two separate halves of 45 mins with a rest interval not to exceed 15 mins

Week 3

Question	Answer
What is the offside rule in football ?	When a player is in the opponents half closer to the opponent's goal line than both the ball and the second last opponent.
What is an opponent ?	Someone who competes with another.
Describe the handball rule in football.	This prevents players gaining advantage by using their hands or arms to play the ball.

Week 4

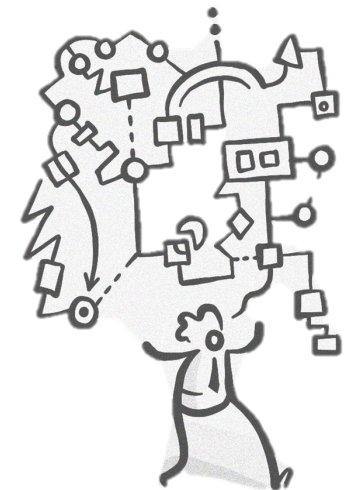
Question	Answer
How many players and teams play in a full game of cricket?	Two teams both with 11 players, take it in turn to bat and bowl.
How do the bowling team defeat the batters ?	The bowling team gets the batters out by bowling overarms to hit the stumps or catching the ball that has been hit.
What is an over in cricket ?	The bowler must deliver 6 legal deliveries (bowls) to constitute an over.

Week 5

Question	Answer
What happens after an over ?	The fielding team switches ends and a new bowler delivers from that end
What are the principles of fairplay ?	Respect, self-control, treat all players equally, respect the rules.
What is meant by fairplay	Set of principles that promote a positive and enjoyable experience for everyone involved in the game.

Week 6

Masters of recall quiz



Topic 3 What is the purpose of this life? (Islam) | RE |

Week 1

Question	Answer
What is the difference between a Muslim and the religion Islam?	A Muslim is the name of a person who follows the religion of Islam.
What is the name of the Islamic God?	Allah.
What is the name of the Islamic Holy building?	A Mosque.



Week 2

Question	Answer
What is the day of Judgment?	The day the world ends, and Allah comes to judge everyone's actions.
Name the Arabic words for Heaven and Hell.	Jannah (Heaven) and Jahannam (Hell).
How many key beliefs are there in (Sunni) Islam?	6. There are 6 Articles of faith for Sunni Muslims to follow to be good Muslims.



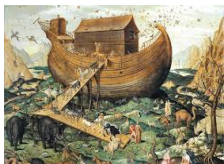
Week 3

Question	Answer
Name the Islamic Holy Book.	The Qur'an.
Why did God have to reveal his messages to so many prophets before Muhammad?	Because the message kept getting changed by human error.
Who gave Muhammad the words for Qur'an from Allah?	Angel Jibril (Angel Gabriel in Christianity)



Week 4

Question	Answer
What was Nuh asked to build by Allah?	An Ark (A large ship) =
What did the people in the story of Nuh do to anger God?	They forgot Allah/ worshipped false gods/ greedy/ lairs and thieves.
What should Muslims learn from the story of Nuh?	To always obey God no matter what and to follow the guidance to be a good Muslim.



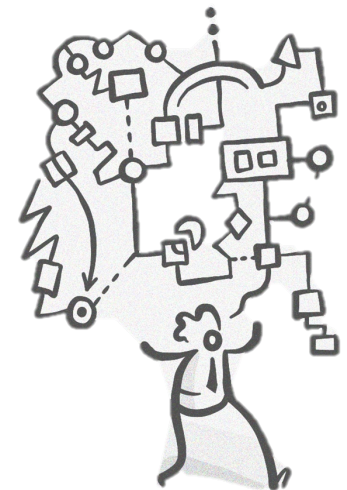
Week 5

Question	Answer
What are Muslims forbidden from drawing/ painting?	Humans/ animals (anything alive), but especially Allah and Muhammad.
Why is drawing Allah/ Muhammad offensive to Muslims?	People may start praying towards the picture/ statue instead of towards Allah – this is the one unforgivable sin.
What calligraphy?	The art of beautiful handwriting in Arabic. (It replaces the art of drawing pictures).



Week 6

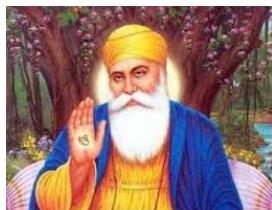
Masters of recall quiz



Topic 4 Should we sell religious buildings to feed the starving? (Sikhism) | RE |

Week 1

Question	Answer
Who is the founder of Sikhism?	Guru Nanak.
What is the name of the Sikh Holy Book?	Guru Granth Sahib.
List the core values of Sikhism.	Equality/ fairness/ safety for all. Destroy all evil in the world.



Week 2

Question	Answer
Define the Khalsa.	The pure ones (Sikhs).
Name the Guru that created the Khalsa.	Guru Gobind Singh (the 10th and final Guru).
What is the aim of the Khalsa?	To defend themselves, their religion and others who can't defend themselves.



Week 3

Question	Answer
Define the 5K's.	Symbols Sikhs wear to show devotion and submission to the Guru.
How were the 5K's introduced?	From the story of the Panj Pyer – the first Sikhs to be initiated into the Khalsa by Guru Gobind Singh.
Is a turban a part of the 5K's?	No. It is a symbol of the Sikh faith, but not part of the 5Ks.



Week 4

Question	Answer
Define the term 'Langar'.	A kitchen where all the food is free, and it is offered to anyone who visits the gurdwara, regardless of their faith.
Define the term 'Community Cohesion'.	Communities working together.
Why does the langar only serve vegetarian food?	To make it inclusive of all faiths. Different faiths have different food laws.



Week 5

Question	Answer
What is the Golden Temple?	The holiest place of worship for Sikhs. In India.
Give one way the Golden Temple helps Sikh community cohesion.	Welcomes anyone/ educates people/ safe space/ feeds 100,000 people per day for free.
Give one way Sikhs help community cohesion in the community.	Raise charity funds/ give time/ teach others



Week 6

Masters of recall quiz



Topic 2 Family | Spanish |

Week 1

Question	Answer
What does 'la familia' mean?	The family
What does 'mi madre' mean?	My mum
What does 'mi padre' mean?	My dad
What does 'mi hermano' mean?	My brother
.What does 'mi hermana' mean?	My sister

Week 2

Question	Answer
What does 'tengo' mean?	I have
What does 'tengo un hermano' mean?	I have a brother
What does 'tengo dos hermanas' mean?	I have two sisters
What does 'Soy hijo único' mean?	I am an only child (boy)
.What does 'soy hija única' mean?	I am an only child (girl)

Week 3

Question	Answer
How do you say 'I would like'?	Me gustaría
How do you say 'I have'?	Tengo
How do you say 'I used to have'?	Tenía
How do you say 'I would like a dog'?	Me gustaría un perro
.How do you say 'I would like a snake'?	Me gustaría una serpiente

Week 4

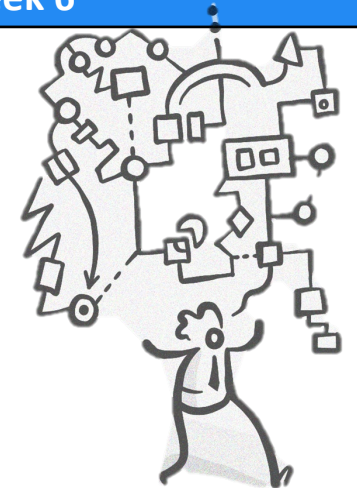
Question	Answer
How do you say 'red'?	Rojo
How do you say 'green'?	Verde
How do you say 'Black'?	Negro
How do you say 'white'?	Blanco
.How do you say 'orange'?	Naranja

Week 5

Question	Answer
How do you say 'he/she has'?	Tiene
How do you say 'he/she has blue eyes'?	Tiene los ojos azules
How do you say 'he/she has brown eyes'?	Tiene los ojos marrones
How do you say 'he/she has brown hair'?	Tiene el pelo castaño
.How do you say 'he/she has blonde hair'?	Tiene el pelo rubio

Week 6

Masters of recall
quiz



Topic 2 Family/ Topic 3 Free time | Spanish |

Week 1

Question	Answer
How do you say 'I am'	Soy
How do you say 'I am tall' (boy)	Soy alto
How do you say 'I am good looking' (girl)	Soy guapa
How do you say 'I am ugly' (boy)	Soy feo
.How do you say 'I am thin' (girl)	Soy delgada

Week 2

Question	Answer
How do you say he/she/ it is'?	Es
How do you say 'he is boring'	Es aburrido
How do you say 'she is happy'	Es alegre
How do you say 'He is medium height	Es mediano
.How do you say 'she is young'	Es joven

Week 3

Question	Answer
How do you say 'I like'	Me gusta
How do you say 'I love'	Me encanta
How do you say 'I don't like'	No me gusta
How do you say 'I hate'	Odio
.How do you say 'I like to play'	Me gusta jugar

Week 4

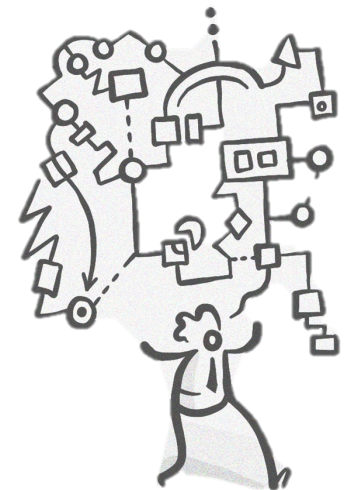
Question	Answer
Jugar al fútbol	To play football
Hacer el ciclismo	To go cycling
Jugar al rugby	To play rugby
Jugar al baloncesto	To play basketball
.Hacer kárate	To do karate

Week 5

Question	Answer
When do we use 'JUGAR' and when do we use 'HACER'?	Jugar is used with ball sports Hacer is used with non-ball sports
Translate Jugar al voleibol	To play volleyball
Translate Jugar al golf	To play golf
Translate 'Hacer equitación'	To go horse-riding
.Translate 'Hacer atletismo'	To do athletics

Week 6

Masters of recall
quiz



Topic 2 Coaster / Coat Hook | Technology (Textiles / Design)

Week 1

Question	Answer
Name 3 safety rules for the Textiles room	<ul style="list-style-type: none"> Do not run Tie hair back Only 1 person on a sewing machine at once Do not lean over others while working Remain seated while using pins and needles. Carry scissors pointing towards the floor.
Name 3 safety rules in the Design Technology Room	<ul style="list-style-type: none"> Do not run Wear an apron Tie your hair up Wear PPE Be aware of your surroundings 1 person on a machine at any one time. Bags and coats in the storage area

Week 2

Question	Answer
What is a coaster?	A small mat for a bottle or cup.
What design elements must your coaster have?	Big enough to fit a cup/ bottle. Be colourful / fit a colour scheme Match the clients wants / needs
What are the following safety symbols for?	Ear Protection Protective Gloves Face Protection Eye Protection Dust Mask/ Protection



Week 3

Question	Answer
Why is it important to plan out a design before you begin construction ?	To ensure that you have worked out if the design will actually work/ fit/ is accurate before using expensive materials that could then be wasted. To ensure you do not waste time and effort on a design that is unfit for purpose.
What is a specification ?	A list of things that a design must have/ include.
What does the yellow line on the floor in the workshop tell us?	This is the area where 1 person can stand while the machine is in operation.

Week 4

Question	Answer
Why do we still use hand stitches in the 21st Century?	<ul style="list-style-type: none"> Better Control Better for delicate projects It's therapeutic Improves coordination Preserves vintage techniques It's a hobby
Why is it important to conduct existing product research?	So that we are aware of what is already available. this can inform design but will also prevent copy right / plagiarism.

Week 5

Question	Answer
What are the names of the 3 hand stitching techniques you have learnt?	<ul style="list-style-type: none"> Back stitch Running Stitch Cross Stitch
Why do we complete a mood board?	This is a quick way of gathering vast amounts of information / ideas which we can then use to help us understand the product, target market or design limitations before starting our own design.
What program do we use for the design of our coat hooks?	Techsoft 2D design

Week 6

Masters of recall quiz






Topic 2 Coaster / Coat Hook | Technology (Textiles / Design)

Week 1

Question	Answer
What are the 5 stages in the design process?	<ul style="list-style-type: none"> Imagine Plan Design Improve Feedback
What is CAD?	Computer Aided Design
What is CAM?	Computer Aided Manufacture

Week 2

Question	Answer
What is meant by applique?	Stitching one piece of material to another. Applique is a needlework technique in which one or more pieces of fabric are attached to a larger background fabric to create pictures or patterns.
Name the following symbol / button from 2D design 	Select This is the select tool. It allows you to click on drawn objects. Once you have clicked on them, they will become highlighted and have yellow boxes around them
Name the following symbol / button from 2D design 	Line Tool This tool adds lines to your page. You can adjust the length and width of the line.
Name the following symbol / button from 2D design 	Grid This button controls the grid on the page. At the moment the dots are set to be 10mm (1cm) apart.



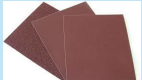
Week 3

Question	Answer
What is the difference between the back stitch and the running stitch?	The running stitch is often a weaker stitch. It has gaps between the stitches. A back stitch is where the thread connects together to form a single running line. This is done by going backwards after each forward stitch to cover the gap. This leaves a stronger stitch as there are twice as many stitches in the same amount of space. In both stitches the size and length of each stitch should be consistent to achieve a high standard.
What colour line on the lazer cutter is used for cutting?	Red
What colour line on the lazer cutter is used for engraving?	Black

Week 4

Question	Answer
What is meant by embellishment?	a decorative detail or feature added to something to make it more attractive
What does Contour mean in 2D design?	Contouring is when you create a stencil out of your image, leaving only the cut lines.
What does Vectorise mean in 2D design?	Vectorising an image makes the image simple and black and white. This removes any blurry parts of the image that the cutter can't use.

Week 5

Question	Answer
Why do we attach another piece of felt to the back of the coaster?	To keep it tidy and to prevent the thread from snagging and working loose.
Name the following tool. 	Coping Saw
Name the following tool. 	Pillar Drill
Name the following tool. 	Sand Paper

Week 6

Masters of recall quiz

