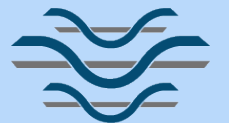




YEAR 8 MASTERY SHEETS

#TheLongdendaleLegacy



Longdendale
HIGH SCHOOL

Literary Movements and Genre | English |

Week 1

Question	Answer
What is meant by <i>authorial intent</i> ?	The impact or effect the writer wants to get across to readers.
What was important to writers in the <i>Romantic era</i> ?	Emotions, imagination and the beauty of nature.
How did Industrialisation cause writers to embrace <i>Romanticism</i> ?	Rebellion against technology, which caused writers to turn to nature instead.
What is meant by <i>individualism</i> ?	Everyone has a unique perspective and voice and should trust their instincts.
What is a <i>simile</i> ?	A figurative device which compares two things using <i>like</i> or <i>as</i> .
What is <i>personification</i> ?	A figurative device where an inanimate object is given human qualities.

Week 2

Question	Answer
What does it mean to <i>analyse</i> ?	To look in depth at a text, to break it apart and to explain how different parts are effective.
What is a <i>noun</i> ?	A naming word: the name of a person, place or thing.
What is an <i>adjective</i> ?	A describing word: a word which describes a noun.
What is a <i>verb</i> ?	A doing word: an action.
What is an <i>adverb</i> ?	A describing word: a word which describes how a verb is done.
What is a <i>pronoun</i> ?	A word which replaces a noun (he/she/it/they etc),

Week 3

Question	Answer
What is meant by the supernatural?	An event or a force beyond what can be scientifically explained.
Why did the supernatural appeal to Romantic writers?	They were fascinated by things they couldn't explain.
What are features of Gothic stories?	They are dark and eerie and create fear in readers.
What is a <i>metaphor</i> ?	A figurative device which compares two things by saying one <i>is</i> the other.
What is <i>pathetic fallacy</i> ?	A figurative device where nature, often weather, mirrors the emotions of the text.
What is <i>juxtaposition</i> ?	A structural device where two opposite or contrasting ideas are used together.

Week 4

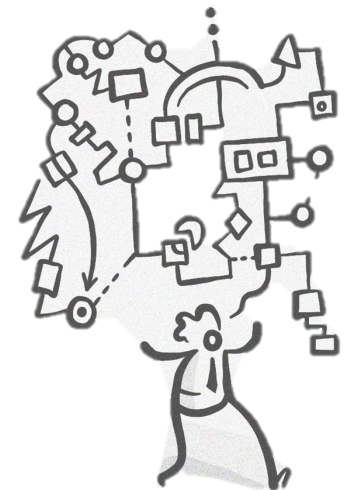
Question	Answer
When was the Victorian period?	The time of Queen Victoria's reign – from 1837-1901.
What was important to writers in the <i>Realist era</i> ?	Capturing real life in an honest way, even if that meant suffering or misery.
Why did writers reject <i>Romanticism</i> in favour of <i>Realism</i> ?	They wanted their writing to be less like fantasy, and more honest.
What was Dickens' <i>authorial intention</i> ?	To share the plight of the poor and to fight for social reform.
What does it mean to <i>advocate</i> for others?	To stick up for them or to argue on their behalf.

Week 5

Question	Answer
What is a rhetorical question?	A question used to make a point, rather than to actually get an answer.
What is an <i>imperative command</i> ?	A sentence which gives an order or instruction to the reader.
What is <i>emotive language</i> ?	Words, phrases or imagery which evokes a strong emotional reaction.
What is an <i>inclusive pronoun</i> ?	A pronoun which includes both the writer and the reader: we / us / our.
What is an <i>exclamatory sentence</i> ?	A sentence with an exclamation mark to denote passion or emotion .

Week 6

Masters of recall
quiz



Literary Movements and Genre | English |

Week 1

Question	Answer
What is the premise of a story in the <i>Science Fiction</i> genre?	Fiction based on imagined future scientific or technological advances.
What is meant by <i>social commentary</i> ?	When a writer's work comments on, judges or illustrates an issue in society.
What were some common Victorian fears?	Scientific developments, human nature, the unknown, the consequences of class divides.
Why did religious faith heighten fear of science in the Victorian times?	Science seemed to contradict some religious ideas.
What is meant by <i>human nature</i> ?	What makes us human: the way people think, feel, and behave.
What is meant by <i>society</i> ?	A group of people who live together in a community with shared rules and values.

Week 2

Question	Answer
What was Stevenson (who wrote <i>Jekyll and Hyde</i>) warning readers about?	The dangers of science and of human nature.
Why was Imperialism commonly written about in the Victorian times?	Britain's powers were growing as we colonised around the world.
What was Wells (who wrote <i>War of the Worlds</i>) warning readers about?	The dangers of Imperialism and of colonisation.
How do you start a paragraph of analysis?	Make a point which answers the question.
What do you use as evidence in your analysis?	One or two quotes from the text.
What does it mean to infer?	To work out what a writer is suggesting beyond just what they have said.

Week 3

Question	Answer
What do we mean when we talk about 'devices' in English?	A technique a writer has used such as simile, metaphor or personification.
Whose reaction must you explore?	The reader's.
What is tentative language?	Words/phrases which show you are not certain: possibly, might, could
What is word-level analysis?	Picking a key word in a quote and exploring its connotations.
What do we mean by <i>connotations</i> ?	Words/ideas/feelings that a word makes us think of.
What do we mean by <i>authorial intent</i> ?	The effect / message the writer intended to put across.

Week 4

Question	Answer
What is literary <i>Modernism</i> ?	A literary movement where writers could be more imaginative and creative than before.
What is meant by <i>stream of consciousness</i> ?	When writing mirrors the uncontrolled nature of human thought.
Why was there a lot of uncertainty in the <i>Modernist</i> era?	Because the world was changing so rapidly.
What do we mean by tone?	The mood or feeling of a text.
Why must you always develop your ideas in detail?	In order to be convincing or persuasive.

Week 5

Question	Answer
What is <i>Dystopian</i> fiction?	A story set in a fictional place or society where people are unhappy, afraid, and treated unfairly.
What was Orwell (who wrote <i>1984</i>) warning readers about?	The dangers of corrupt leaders and of technology.
What is the function of a paragraph?	To section different ideas, themes and topics in your writing.
What are the three types of sentence?	Simple, compound and complex.
What are the four functions of sentences?	Declarative, interrogative, exclamatory and imperative.

Week 6

Masters of recall
quiz



Topic Representing Data, Tables and Probability | Maths |

Week 1

Question	Answer
1) What is a variable in the context of graphs?	One set of data that is represented on the graph
2) What does it mean if something depreciates in value?	It goes down in value
3) What is a positive correlation?	Two variables that move in the same direction.
4) What is a negative correlation?	Two variables that move in opposite directions
.5) What would a graph look like if it the variables had no correlation?	There would be no general direction of the points on the graph.

Week 2

Question	Answer
1) How can we tell if two things have a strong correlation?	The data plotted will all closely follow the same direction
2) What is the origin?	The centre of the graph (0,0)
3) How do we draw a line of best fit?	We draw a line that passes in the general direction of most of the points, this does not have to pass through (0,0,)
4) What is an outlier?	A piece of data that does not fit the general trend.
.5) How do we use the line of best fit to estimate a value?	We draw the line of best fit and plot where the x/y co-ordinate will be on the line of best fit to then find the corresponding co-ordinate.

Week 3

Question	Answer
1) Can you define discrete data?	Data that can only have a specific value within a range.
2) Can you define continuous data?	Continuous data is information that can take any value, such as speed, so these values don't need to be whole numbers
3) Can you define quantitative data?	Numerical Data
4) Can you define qualitative data?	Non-numerical data

Week 4

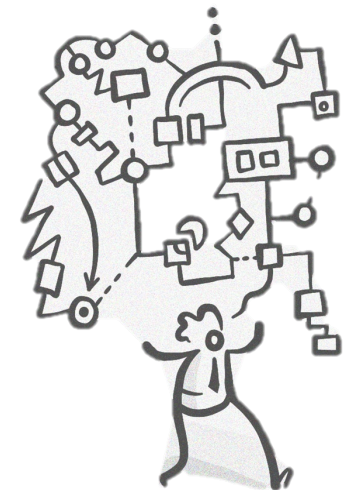
Question	Answer
1) What must all probabilities add to make?	1
2) How would I select data systematically?	Select data at given increments within the data set.
3) What is Sampling Bias?	Sampling bias occurs when the sample selected is not representative of the population, leading to biased results
4) What is a denominator?	The number on the bottom of a fraction
.5) What does union mean?	And

Week 5

Question	Answer
1) What is an expression?	An algebraic expression that is a collection of multiple terms.
2) What do we draw if we want to expand a bracket?	A grid
3) What does it mean to expand?	To multiply out the brackets
4) What operation are we performing if we are expanding?	Multiplying

Week 6

Masters of recall quiz



Topic Brackets equations and inequalities, Sequences | Maths |

Week 1

Question	Answer
What is the difference between a term and an expression?	A term is one part of an expression e.g. $3t$ in $3t + 7$
When can't an expression be simplified?	When there are no common factors
Why are $4 - q$ and $q - 4$ not equivalent?	Because subtraction is not commutative
What does it mean if something has been squared ?	It has been multiplied by itself
How do correctly write $a \times b$?	ab

Week 2

Question	Answer
What does it mean to solve an equation?	Work out the value of the variable
Define positive	A number greater than zero
Define negative	A number less than zero
A positive number x by a negative number will make a?	Negative
A negative number x by a negative number will make a?	Positive

Week 3

Question	Answer
What does it mean to expand when we are working with brackets?	Multiply everything inside the bracket by what is in front of the bracket
What is the link between multiplication and repeated addition?	They are the same 4×3 is 4 lots of 3 which is $4 + 4 + 4$
Is it possible to have three or more terms inside a bracket?	Yes they could all be different variables
What is the symbol for an identity?	\equiv
Which operation calculates the product of 2 values?	Multiplication

Week 4

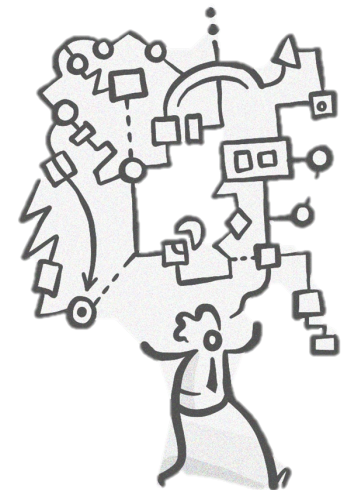
Question	Answer
Can 0 ever be a factor of an expression?	No because $0 \times \text{anything} = 0$
What does it mean to factorise fully?	Take out the highest common factor not just any factor
Is it always true if you can't have an expression then it can't be factorised?	No it could still be divided by another odd number
What are like terms?	Like terms contain the exact same variable/ variables e.g. $3p$ & $4p$ or $2qt$ & $9qt$
What are unlike terms?	Unlike terms contain different variables e.g. $5x$ and $6y$

Week 5

Question	Answer
What's the name for a sequence where there is a constant difference?	Linear
What would the graph of a linear sequence look like?	A straight, diagonal line
What type of sequence adds the two previous terms together?	Fibonacci
What is a non-linear sequence?	A sequence that does not go up by the same amount each time
What is a coefficient?	A number in front of the variable. Eg 3 is the coefficient of $3n$

Week 6

Masters of recall quiz



Topic Respiration and photosynthesis, Movement and Pressure | Science |

Week 1

Question	Answer
What is a risk factor?	A risk factor increases the chance that a person will develop a certain disease.
What is a hazard?	Something thing or situation that presents a threat to people
.What is a risk?	How likely something is to be harmful.
What is a precaution?	Something that should be done to prevent any harm.
.What is respiration?	A chemical reaction that happens in all organisms. It is essential for life because it releases energy.

Week 2

Question	Answer
What is aerobic respiration?	Aerobic respiration is respiration that requires oxygen.
Where does aerobic respiration take place in a cell?	Mitochondria
What are reactants for aerobic respiration?	Oxygen + glucose
What are the products for aerobic respiration?	Carbon dioxide + water (+energy)
.What is anaerobic respiration?	Anaerobic respiration happens when the body doesn't have enough oxygen.

Week 3

Question	Answer
Write the word equation for anaerobic respiration in animals?	Glucose → Lactic Acid
Describe the oxygen debt?	The volume of extra oxygen the body needs after exercise to react with the accumulated lactic acid to break it down.
How does the amount of energy transferred in aerobic respiration compare with anaerobic respiration?	More energy is transferred in aerobic respiration.
What happens during intense exercise?	During intense exercise, if there is not enough oxygen then anaerobic respiration takes place.
When does fatigue happen?	Fatigue happens when the energy stores in our muscles start to run out faster than the body can replace them.

Week 4

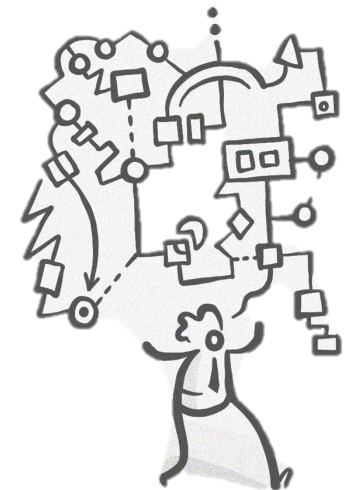
Question	Answer
What is fermentation?	Fermentation is when yeast (or bacteria) carry out anaerobic respiration.
Write the word equation for anaerobic respiration in plants and yeast cells?	Glucose → ethanol + carbon dioxide
What is ethanol used to make?	Alcoholic drinks like beer and wine.
Why is carbon dioxide useful?	It is useful to bakers because it causes dough to rise and make a 'spongy' texture.
.What is photosynthesis?	A chemical reaction that takes place in chloroplasts in plant cells. Carbon dioxide and water react to produce glucose and oxygen.

Week 5

Question	Answer
Write the word equation for photosynthesis?	Carbon dioxide + water $\xrightarrow{\text{light}}$ glucose + oxygen
Define the independent variable?	The thing that scientists change, to look at the effect of the changes.
Define the dependent variable?	The thing that scientists measure, to look at what happened as a result of changing the independent variable.
Define the control variable?	Variables that need to be kept the same, so that scientists know any effects on the dependent variable are caused by the independent variable.
Define rate?	The amount of change per unit time.

Week 6

Masters of recall quiz



Topic Movement and Pressure, and Changing substances | Science |

Week 1

Question	Answer
What is speed?	How much distance is covered per unit time.
Write the word equation to calculate speed?	Speed = distance / time
What are the SI units for speed?	m/s (metres per second)
What are the SI units for distance	M (metres)
What are the SI units for time?	s (seconds)

Week 2

Question	Answer
Write the word equation to calculate pressure?	Pressure = force / area
What are the SI units for pressure?	N/m ²
What are the SI units for force?	N (Newtons)
What are the SI units for area?	m ² (metres)
What is pressure?	Force exerted per unit area.

Week 3

Question	Answer
What is a moment?	A moment is the turning effect of a force.
Write the word equation to calculate a moment?	Moment = force x perpendicular distance
What are the SI units for moment?	Nm (Newton metre)
What are the SI units for force?	N (newtons)
What are the SI units for force?	m (metres)

Week 4

Question	Answer
What is a physical change?	A physical change only changes the state (solid, liquid or gas) of a substance. Physical changes only change the energy that each particle has. Therefore physical changes are reversible.
What is a chemical change?	Chemical changes rearrange the atoms to produce at least one new substance. Chemical changes are usually irreversible.
State the law of the conservation of mass?	The law of conservation of mass tells us that the total mass of products = total mass of reactants.
What is oxidation?	Oxidation is the gain of oxygen.

Week 5

Question	Answer
What is reduction?	Reduction is the loss of oxygen.
What does the pH scale show?	The pH scale, from 0 to 14, is a measure of the acidity or alkalinity of a solution.
What is the name of the test for testing for Hydrogen gas? Describe how to test for Hydrogen gas?	Squeaky pop test. Place a lit splint into a test tube of gas and if Hydrogen gas is present it will make a squeaky pop sound.
Describe a test for carbon dioxide gas?	Use calcium hydroxide (limewater) and the limewater will turn cloudy when the carbon dioxide gas is bubbled through it.
Describe a test for oxygen gas?	Place a glowing splint into some gas and if oxygen is present it will relight.

Week 6

Masters of recall quiz



Topic 2 Banksy | Art |

Week 1

Question	Answer
What is political art?	Art is said to be political if it relates to some political situation or some political figures and challenges the current situation
Name a famous political artist	Banksy, Pablo Picasso, Frida Kahlo, Jean Michel Basquiat, Diego Rivera, Barbara Kruger, Ai Weiwei, Shepard Fairey, Max Ernst
Why is political art important?	Artists use their work to express their political views and to promote social change. Governments use art to promote their agendas.

Week 2

Question	Answer
What is Graffiti art?	Images or text painted usually onto buildings, typically using spray paint
Why is graffiti art illegal?	It is considered to be vandalism and is often completed without permission
Why do people create Graffiti?	It is a way of communicating ideas and expressing themselves

Week 3

Question	Answer
What is the name of the graffiti artist that we are learning about?	Banksy
What is the subject matter of Banksy's work?	People, children, objects, policemen, rats, animals
Name a fact about Banksy?	<ul style="list-style-type: none"> • He is from Bristol • His identity is unconfirmed • He started doing graffiti when he was 14 years old • He struggled with a spray can, so started cutting stencils • Blek le Rat, a French stencil artist, is one of Banksy's earliest influences • Girl with a balloon is one of his most recognizable artworks

Week 4

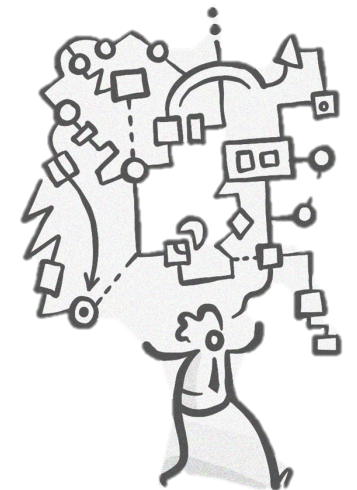
Question	Answer
What needs to be included in a research page?	<ul style="list-style-type: none"> • A title • Photos of the artists' work. • Own small copy of the artists' work. • Facts about the artist. • Opinions about the artists' work. • Decorative background

Week 5

Question	Answer
What is a stencil?	A thin sheet of card, metal, wood or plastic with an image or letters cut out of it. Paint, spray paint or ink is then applied through the holes onto a surface.
Where were the first stencils found?	They were found in Paleolithic cave paintings, as early as 30.000 BC.
How do you create a successful stencil?	By cutting carefully and by applying a small amount of paint at a time.

Week 6

Masters of recall quiz



Topic 2 Banksy | Art |

Week 1

Question	Answer
What is propaganda?	Information of a biased nature used to promote a political cause or point of view
How does this link to the work of Banksy?	He promotes political views which are anti-capitalism and anti-war

Week 2

Question	Answer
What is a tag in art?	It is a graffiti artist's signature, usually a pseudonym or logo
Where might you see a tag?	On a building or structure
How has the artist made this drawing look 3D?	By adding shadows around the letters to add depth to them



Week 3

Question	Answer
Name three things that you can include in a name tag to make it effective?	<ul style="list-style-type: none"> Well-planned lettering Blended colours Bold outlines Shading around letters to make them look 3D Contrast between the tag and the background Skillful use of tone

Week 4

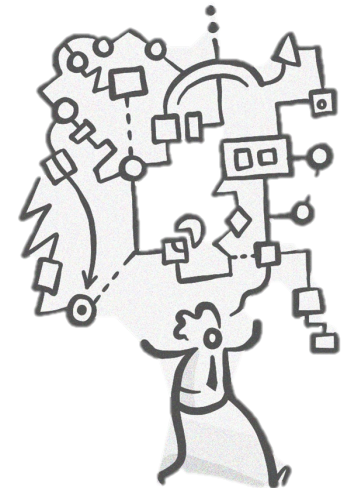
Question	Answer
What is a template?	A shape which is used as a guide to cut around
How can you make your brick painting successful?	<ul style="list-style-type: none"> Draw the shape evenly Line up the template carefully to create a repeated pattern Apply tone to make the bricks look 3D and realistic

Week 5

Question	Answer
What does composition mean?	Composition is the way in which elements of an artwork are combined or arranged
What are complementary colours?	Colours opposite each other on the colour wheel, for example: red and green, orange and blue and yellow and purple
What are harmonious colours?	Colours next to each other on the colour wheel, for example: yellow, orange and red

Week 6

Masters of recall quiz



Networks and HTML | Computing |

Week 1

Question	Answer
What is the internet?	A worldwide network of computers
State 2 uses of the internet?	<ul style="list-style-type: none"> • Entertainment e.g. streaming films • Communication e.g. Email • Social Media • Online shopping
What is a packet?	Small units of data sent and received over the internet
What does a packet contain?	Each packet contains a part of the message, an address of where it came from, and an address of where it is going
What is an IP address?	A unique number that identifies a device e.g. a computer using the internet

Week 2

Question	Answer
What does HTML stand for?	Hyper Text Markup Language
What tag needs to be at the top of your Notepad++ page to indicate you want to create a webpage?	<html>
What tag needs to be at the bottom of your Notepad++ page to indicate you have finished your webpage?	</html>
What tag gives the name of the webpage on the browser?	<title>

Week 3

Question	Answer
What does the <u> tag do?	Underline the text
What does the <i> tag do?	Make the text italic
What does the tag do?	Make the text bold

Week 4

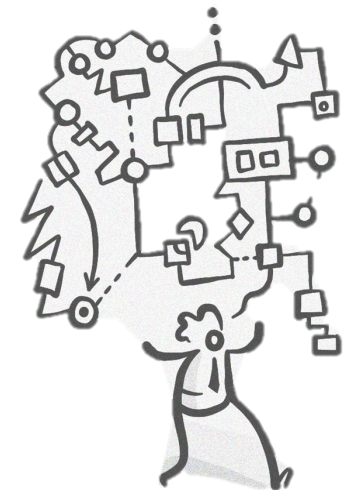
Question	Answer
What does the <p> tag do?	Creates a new paragraph
What does the <marquee> tag do?	Allows the text to scroll across the page
What does the <h1> tag do?	It creates a heading. It will be the largest text on the page.
What tag will come before the 2nd largest text on the webpage?	<h2>

Week 5

Question	Answer
What is a Search Engine?	A program that searches for and identifies items in a database that match words entered by the user
Putting your words between " " searches for what?	The exact word or phrase
Using the - symbol searches for what?	Excludes all searches that contain the word that comes after the -
Using OR in your search does what?	Find one keyword or the other



Week 6

Masters of recall quiz




Advanced Spreadsheets | Computing |

Week 1

Question	Answer
What is a vector graphic?	A vector graphic is created directly from geometrical shapes. The shape of the object is stored as a set of points and connected with lines.
In Inkscape which is the tool you use to select an object or move it?	
How do you rotate a shape in Inkscape?	Select the shape and double click your mouse
What tool do you use to draw lines?	

Week 2

What tool do you use to write text?	
How do you put the text on the path of an object	From the main menu, select Text > Put on Path.
How do you flip the text	H or V depending on the way you want to flip it
How do you duplicate a shape	Ctrl D

Week 3

Question	Answer
What does a formula always start with in spreadsheets?	=
What does the SUM function do?	Add the contents of the cells selected
What does the Average function do?	Finds Average of the cells selected
What does the Max function do?	Finds the largest value of the cell selected
What does the Min function do?	Finds the smallest value of the cells selected

Week 4

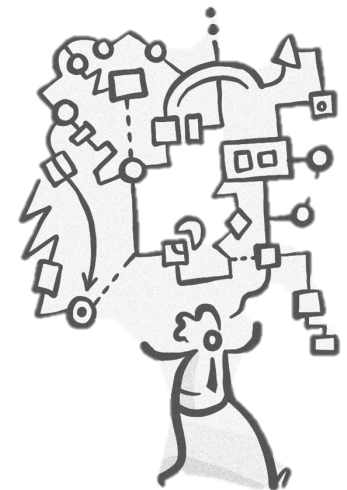
Question	Answer
What is a relative cell reference?	When you want the formula to change to match the row or column it applies too
What is an absolute cell reference?	When you don't want the formula to change when filling cells
What symbol is used to indicate that you want to use absolute cell referencing	\$

Week 5

Question	Answer
What is conditional formatting?	When the format of the cell changes depending on the value in it
What is the IF Function used for in spreadsheets?	When you want to make a choice and check if the statement is true or false
What does the COUNT IF Function used for in spreadsheets	It counts the number of cells in a selected range that meet a specific criteria

Week 6

Masters of recall quiz



Blood Brothers | Drama |

Week 1

Question	Answer
What is a narrator?	A person who delivers a commentary accompanying a story.
Where is Blood brothers set?	In Liverpool.
When was it written?	1981.
What is a prologue?	The introductory section of a dramatic work.

Week 2

Question	Answer
Who are the blood brothers?	Mickey Johnstone and Eddie Lyons.
How many children does Mrs Johnstone have?	7 children with 2 on the way!
Who does Mrs Johnstone give one of her twins to?	Mrs Lyons.
What is Mrs Johnstone's job?	She is a cleaner.

Week 3

Question	Answer
What is the Johnstone family's social class?	Working class.
What is the Lyon family's social class?	Middle class?
How old are Mickey and Eddie when we first meet them?	7 years old.
What is superstition?	The irrational belief in supernatural influences. Usually referring to good and bad luck.

Week 4

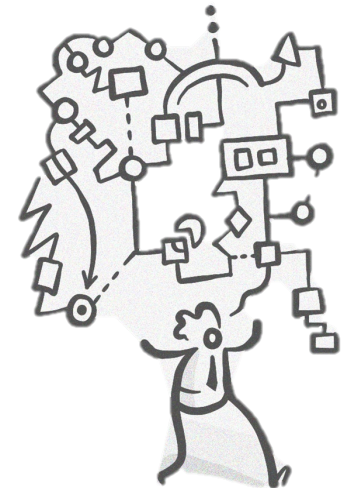
Question	Answer
Who is Linda?	Mickey and Eddie's friend. They both fancy her.
Who does Linda marry?	Mickey.
Who goes away to university at 18?	Eddie.
Who loses his job in the song, 'Just another sign of the times.'	Mickey.
Why does Mickey go to prison?	He is blamed for Sammy shooting a man in a robbery.

Week 5

Question	Answer
How old are the boys by the end?	About 30.
Why is Mickey angry?	Because Eddie kissed Linda.
What is Eddie's job?	He is a councillor for the local government.
What is Mickey addicted to?	Antidepressants.
Which song plays at the end?	Tell me it's not true.

Week 6

Masters of recall quiz



Topic 4 Blood Brothers' Theory | Drama |

Week 1

Question	Answer
What is technical theatre?	Lighting and sound.
What are two major themes of Blood brothers?	Class and superstition.
Which characters are middle class?	The Lyons Family.
What ages of Mickey and Eddie do we see through the play?	7, 14, 18 and later as adults.

Week 2

Question	Answer
What is a thrust staging?	Where the audience are sat on three sides. Like in the drama classroom.
What is another name for a proscenium arch staging?	End on.
What famous sound effect is used in the final scene?	A gunshot.
Who tell Mickey about Linda and Eddie kissing?	Mrs Lyons.

Week 3

Question	Answer
How would Eddie and Mickey's costume be different?	Eddie's would show he comes from a wealthy family whereas Mickey's clothes would be worn and hand-me downs.
What accent does the Johnstone family speak with?	Scouse.
What accent do the Lyons family speak with?	Received pronunciation.
Which scene demonstrates how the boys are treated differently based on their class?	The policeman scene.

Week 4

Question	Answer
What style of theatre is Blood brothers?	A musical.
Why is it known as the standing ovation play?	Because of its powerful emotive ending.
Would blood brothers be considered a comedy or a tragedy?	A tragedy because the twins both die.
What is social housing?	Housing provided by the local council.
Which symbol that starts off with a toy is featured heavily?	Guns.

Week 5

Question	Answer
What is foreshadowing?	An indication of something that will happen in the future.
What is a lighting designers' job?	To design and create the lights for a show to tell the story.
What is a stage managers job?	To oversee the running of the theatre through rehearsals and the shows.
What does it mean for a show to tour?	To travel to lots of theatres around the country.
Why is Blood Brothers still relevant today?	Because class inequalities still exist.

Week 6

Masters of recall quiz



Topic 3 Raging Russia | Geography |

Week 1

Question	Answer
Which two continents is Russia part of?	Europe and Asia
How many countries border Russia?	14
What is Russia's population?	144 Million
What is the capital of Russia?	Moscow
How many time zones does Russia span?	11

Week 2

Question	Answer
Which region in Russia has the coldest climate, with an average temperature of -15°C?	Eastern Siberia, in northeastern Russia, has the coldest climate, averaging -15°C.
Why is western Russia more developed than eastern Russia?	Western Russia is more developed due to trade routes, milder climate, and flatter, more accessible terrain.
What are Russia's five major biomes?	Russia's five major biomes are tundra, coniferous forest, steppe, deciduous forest, desert.
What is the definition of climate?	Climate is the long-term weather patterns in a region over 30 years.
What does precipitation mean?	Precipitation is water falling as snow, rain, sleet, or hail.

Week 3

Question	Answer
How does the tundra biome limit development in Russia?	The tundra's harsh conditions and permafrost make building infrastructure difficult.
What industries in the taiga support Russia's development?	Logging is the main industry supporting development in the taiga.
How do fertile soils in the steppe aid Russia's development?	Fertile steppe soils support agriculture, boosting Russia's economic growth.
How many people live per square kilometre in Russia?	Russia has about 9 people per square kilometre on average.
Is Russia's population increasing or decreasing?	Russia's population is decreasing due to low birth rates, migration.

Week 4

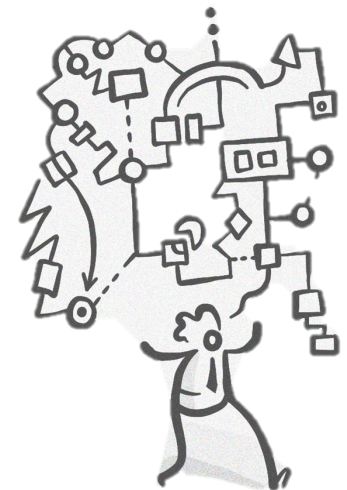
Question	Answer
What development indicators are included in the Human Development Index (HDI)?	Life expectancy, literacy rate and income levels
What percentage of people in Russia live in urban areas?	73%
How did Russia's economy change after the collapse of the Soviet Union in 1991?	Shifted to market-oriented economy; example: privatised industries.
What is the formula to calculate a country's Gross National Income per capita (GNI)?	Total income of a country divided by its population.
What does privatisation mean?	Transfer of public assets to private ownership.

Week 5

Question	Answer
What did Russia plant on the seabed beneath the North Pole in 2007?	Planted a titanium flag to claim the Arctic seabed.
Name one country in the Arctic Council besides Russia.	Canada, Denmark, Finland, Iceland, Norway, Sweden and United States
Why is Russia's Arctic coastline important?	Rich in resources and strategic shipping routes.
What area did Russia annex from Ukraine in 2014?	Crimea
Why did Russia go to war with Ukraine in 2022?	To keep Ukraine away from Western influence by control

Week 6

Masters of recall quiz



Topic 3 What was the impact of the British Empire in India? | History |

Week 1

Question	Answer
What is the meaning of the key word 'empire'?	A group of countries ruled by a single powerful country.
What is the meaning of the key word 'colony'?	A country ruled by another country as part of an empire.
Name three British colonies.	Canada, India, Africa, West Indies, Australia and New Zealand.
What is the key word for 'a more advanced and developed society'?	Civilised.
In 1600, which country was more civilised, England or India?	India.

Week 2

Question	Answer
Who were the Mughals?	The Muslim rulers of India between 1600 and 1850.
What was the East India Company?	British organisation that traded with India.
How did the East India Company protect its trade?	It had its own private army.
What year was the East India Company founded in England?	1599.
How did Robert Clive gain control of Bengal?	Persuaded an Indian General to overthrow their own ruler who was then captured and executed.

Week 3

Question	Answer
In History, what is an interpretation?	An opinion or version of past events based on evidence.
Why was Robert Clive seen as a great hero in Britain?	He helped Britain to gain control over Bengal.
Who did Robert Clive work for?	East India Company's private army.
Who owned the East Indian Company?	British Merchants.
What did the East Indian Company trade?	Indigo, Spices, Silk, Gems.

Week 4

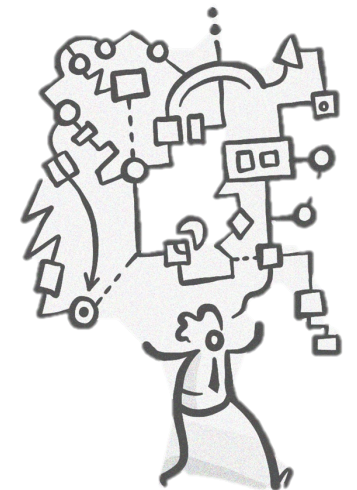
Question	Answer
What is a mutiny?	Disobeying the people in charge and refusing to follow orders.
What was the short-term cause of the Indian Mutiny?	Cartridges in rifles that were used by the Sepoys were greased with cow/pig fat which went against their beliefs.
What was the name for the Indian soldiers in the East Indian Company army?	Sepoys.
What was the outcome of the Indian Mutiny?	The British defeated the Indians and punished them brutally.

Week 5

Question	Answer
Who ruled India between the years 1858 and 1947?	The British Raj (Government).
Name an advantage of the British Empire ruling India.	The British built irrigation systems and railway networks improving trade, water and food supplies in India.
What is a massacre?	The unnecessary killing of a large number of people.
What year did India gain independence from the British Empire?	1947.

Week 6

Masters of recall quiz



Topic 4 How Far Away was England from a Revolution? | History |

Week 1

Question	Answer
What is the meaning of the key word, 'Revolution'?	A complete and total change of the people in power.
Who was the last king of France?	Louis XVI.
Why did the French Revolution frighten the British Government?	They were worried the people of Britain were going to do the same as the French and revolt.
What is an absolute monarch?	Life centred around the king/queen, who has complete power.
In France, what were the 3 estates?	Clergy (church), nobility and the rest of the population.

Week 2

Question	Answer
What is the meaning of 'democracy'?	A system of governing a country using the will of the people.
Why were people unhappy with the voting system in Britain in the 1800s?	Only the rich could vote, MPS did not get paid, it was not a secret ballot.
Who were the Luddites?	Workers who protested the use of new machines by destroying them.
What did the Luddites demand?	The removal of machines in factories.
What punishment did the Luddites receive?	They were hanged to death.

Week 3

Question	Answer
What year was the Peterloo Massacre?	1819.
What was the aim of the protestors at Peterloo?	Achieve the vote for the working-class in Britain.
Who was the leader of the Peterloo Massacre?	Henry Hunt.
How many protestors gathered in St. Peter's Field?	60,000.
How did the government deal with the protestors at Peterloo?	Ordered a private army to stop the crowd.

Week 4

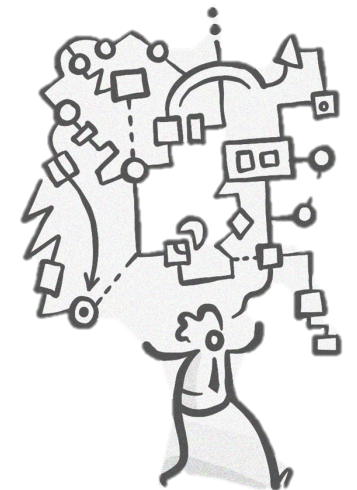
Question	Answer
What year was the Great Reform Act introduced?	1832.
Name one change that the Great Reform Act introduced.	It increased the number of voters.
Name one thing that the Great Reform Act failed to introduce.	Women and the working class could still not vote, MPS did not get paid, constituencies were unequal sizes, elections still held in public.
What is the meaning of 'Suffrage'?	The right to vote in an election.

Week 5

Question	Answer
What is the meaning of the key word, 'radical'?	If someone is considered very different from anything that has come before.
Who were the Chartists?	A working-class movement who wanted to gain political rights.
What was one of the aims of the Chartist's movement?	Equal constituencies, secret ballot, MPs to be paid, annual election, every man to be 21+ to vote.
Which one of the Chartists' demands still hasn't been introduced today?	Annual elections.

Week 6

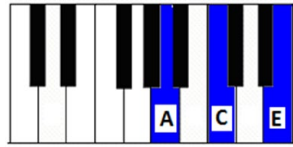
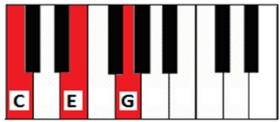
Masters of recall quiz



Topic 3 Tabs and Technique [Ukulele] | Music |

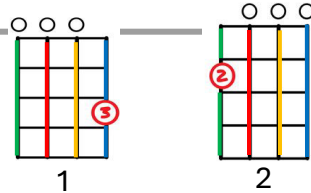
Week 1

Question	Answer
What is the word for the number of instruments playing/amount of sound?	Texture
What does TIMBRE mean?	The sound of an instrument (e.g. a guitar sounds different to a trumpet).
How many strings does a ukulele have?	4
Identify the chords below:	Red chord = C Blue chord = Am



Week 2

Question	Answer
What notes are the ukulele strings tuned to (top to bottom)?	GREEN = G -----TOP RED = C YELLOW = E BLUE = A -----BOTTOM
On the ukulele, what are the spaces between the little metal bars called?	Frets
Identify these chords:	1 = C chord 2 = Am chord

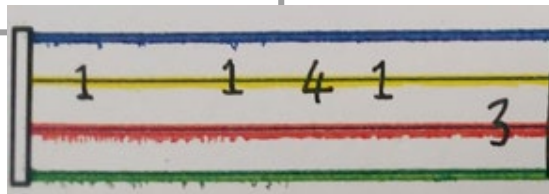


Week 3

Question	Answer
What is the name of the small plastic triangle that a ukulele player or guitarist uses to play the guitar?	Pick or plectrum
What is the pattern of FOUR chords that we have been learning to play?	C chord, G chord, Am chord, F chord.
Of the chords we have learnt, which one is hardest to play?	G chord
Why is it hardest to play?	It requires three fingers
Playing the strings up and down is called what?	Strumming

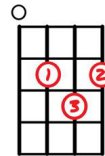
Week 4

Question	Answer
What is the name for the system of numbers we use to play ukulele or guitar?	Tab
Synth is another name for what?	Keyboard/piano
What does the number 1 refer to below?	Fret 1



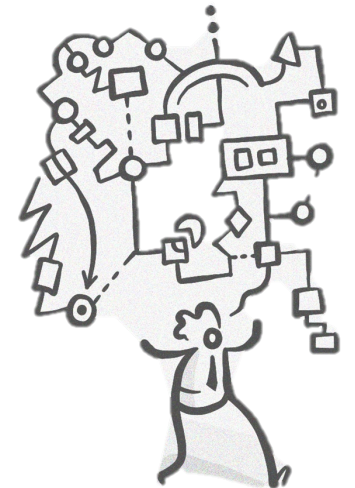
Week 5

Question	Answer
What chord is this?	G chord
Which note is higher?	5 because it is further up the string.
The ukulele belongs in which musical family?	Strings



Week 6

Masters of recall quiz



Topic 4 Music in Advertising | Music |

Week 1

Question	Answer
What is the name for the information that they say very quickly at the end of an advert (e.g. "Batteries not included")?	Small print
What items will you need when setting up a keyboard?	Plug, headphones, splitter and music stand.
A good advert will have layers in the music. What is the musical term that describes the layers?	Texture
What is the name for the short memorable phrase that appears at the end of an advert (e.g. "Just Do It")?	Slogan

Week 2

Question	Answer
Use an adjective to describe the type of voice best used for an advert.	Enthusiastic (allow any other appropriate ADJECTIVE).
What is the musical word for getting louder?	Crescendo
What is the musical word for a repeated musical pattern?	Ostinato
What is the minimum number of notes required to make a chord?	Two

Week 3

Question	Answer
What is the musical word for getting quieter?	Diminuendo
What musical word describes the sound of an instrument?	Timbre
What musical word describes the volume of music?	Dynamics
What is the musical word for sliding up or down the notes?	Glissando

Week 4

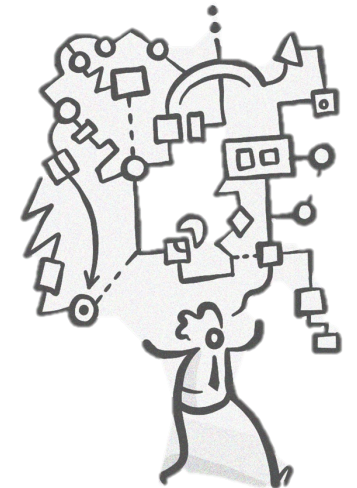
Question	Answer
Your advert needs to show professionalism. Name two ways you can do this that we have discussed in class.	Be well-rehearsed Create the right atmosphere Use musical devices.
We listened to past pupils adverts in class. Name two problems they had.	Not enough music. Lack of enthusiastic voices. Gaps in the music
Identify this rhyming scheme. Nevermind I'll find someone Like you I wish nothing but the best for you too Don't forget me I beg, I remember you said Sometimes in lasts in love but sometimes it hurts instead	AABB

Week 5

Question	Answer
What does rall mean in music?	Slow down.
What does crescendo mean?	To get louder.
What does timbre mean?	The sound of an instrument or voice.
Ostinato and glissando are types of what?	Musical device.

Week 6

Masters of recall
quiz



Topic Rules, Strategies and Tactics Pillar 2 | PE |

Week 1

Question	Answer
Name this definition "the decisions people make about how, when and where to move"	Tactics
How do tactics link to motor competence ?	Through the development of cognitive and motor decision making skills
What does cognitive mean ?	This means thinking, reasoning, remembering

Week 2

Question	Answer
What are motor decision -making skills ?	The learned abilities that require coordinated movements of muscles to perform tasks.
What is meant by motor learning?	The brain learning the connection between limb motion and the required muscular force
Define muscular force	Muscular force is the force exerted by using body parts such as the arms or legs

Week 3

Question	Answer
Give examples of muscular force in every day life	Opening and shutting a door, squeezing out wet clothing, pushing a trolley
Give a sporting example of muscular force	Kicking a ball, lifting weights
What are then three components of motor skill competence ?	Locomotive skills, objective control skills, stability skills.

Week 4

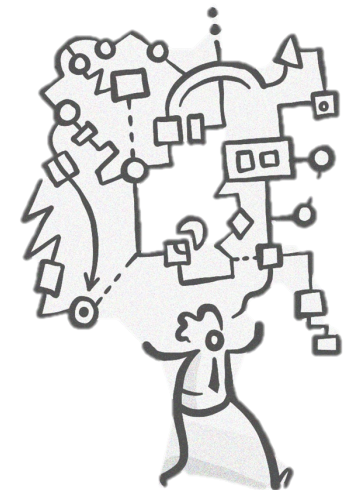
Question	Answer
Define the word locomotive	The ability to move
Define locomotive skills.	The ability to move through space such as running, jumping or hopping.
What are object control skills	The ability to move or manipulate objects in space .

Week 5

Question	Answer
Give an example of an object control skill	Kicking, throwing or catching a ball.
What does stability mean	The quality or state of being stable, linked to steadiness.
What are stability skills	Non travelling body rolling, bending or twisting

Week 6

Masters of recall quiz



Topic Rules, Strategies and Tactics Pillar 2 | PE |

Week 1

Question	Answer
Rule of sports football pickleball dance netball	The ball is served underhand from the right side of the court and is played diagonally across to the other service court.
How is the ball served in pickleball ?	
What must happen to the ball before you return serve in Pickleball ?	The ball must bounce
When can the ball be return immediately in Pickleball ?	After the third ball.

Week 2

Question	Answer
Which side score points in Pickleball ?	The serving side
How many points are needed to win a full game of Pickleball ?	The game ends when one of the parties gets 11 points, with a 2-point lead.
What is the "kitchen" in Pickleball	The court is divided into two service boxes and then a non-volley zone close to the net called 'the kitchen'.

Week 3

Question	Answer
How long do you serve for in Pickleball ?	The rules of pickleball state you can only win points on your serve and you continue serving until you lose a point.
How many players are on a Netball team ?	7
Can you name all positions	GS/GD/GA/WD/WA/C/ GK

Week 4

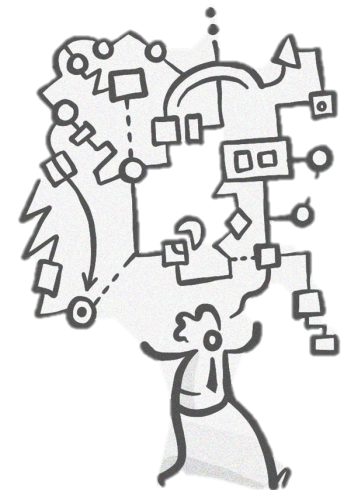
Question	Answer
What is the footwork rule in Netball ?	Players cannot move with the ball. if selecting one foot to be their leading foot then you can pivot but the other must stay planted until the ball is released.
Describe the offside rule in Netball.	All players, whether they have the ball or not, cannot move into an area of the court which their position is not allowed to enter.
Discuss the contact rule in Netball	'Contact' occurs when a player's actions interfere with an opponent's play whether these are accidental or deliberate.

Week 5

Question	Answer
Define the term canon in dance	Choreographic form in which individuals and groups perform the same movement/phrase beginning at different times.
Explain what choreographic devices are ?	Choreographic devices are tools that are used by choreographers to develop and modify dance material.
List the choreographic devices used.	motif and development, repetition, contrast, highlights, climax, manipulation of number, unison and canon.

Week 6

Masters of recall quiz



Topic 3: Why is Christianity so popular? | RE |

Week 1

Question	Answer
What is meant by the 'nature of something'?	What is something like?
List the three ways God can be understood by humans.	God as the Father, the Son (Jesus) and the Holy Spirit.
What did Jesus teach?	To love thy neighbour.



Week 2

Question	Answer
Define the term 'denomination'.	The development of different groups within one religion.
Define the term 'The Great Schism'.	The big split in the church from one large group of Christians to Eastern Orthodox and Catholic Christians.
Define the term 'The Protestant Reformation'.	Split in the Catholic church to Catholics and Protestants.



Week 3

Question	Answer
Define the term 'Salvation'.	Being saved from bad things on earth.
What miracle did Jesus perform in the story of Lazarus?	Resurrection.
What is the story of Lazarus evident of?	Tells people that Jesus' power is real/ that the afterlife is real/ that everyone can get to Heaven.



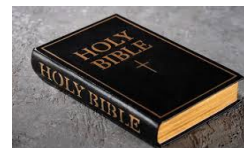
Week 4

Question	Answer
Roughly which time of the year was Jesus born?	Springtime. Not winter.
What book made Christmas a popular holiday?	A Christmas Carol.
Which aspect of his life did Jesus tell us to remember, his birth or his death?	His death.



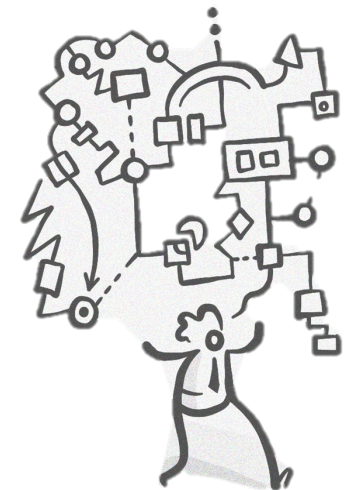
Week 5

Question	Answer
Define the word 'Bible'.	Greek origin for library.
What does the Old Testament tell Christians?	Tells Christians what God is like and to get ready to expect Jesus.
What does the new Testament tell Christians?	Tells Christians about the life and teachings of Jesus.



Week 6

Masters of recall quiz



Topic 4: Why is Christianity so popular? | RE |

Week 1

Question	Answer
Define the term 'Evangelism'.	Spreading the good news (the word of God).
What was Jesus' friend Peter's vision?	His vision showed him that he had no right to judge who should be told about Jesus.
How did Saul of Tarsus help to spread Christianity?	After persecuting Christians, he had a vision of God telling him to stop. He then travelled all over Rome to spread the message.



Week 2

Question	Answer
Define the Holy Trinity.	The three parts of God; The father, the Son and the Holy Spirit.
Define the term 'monotheist'.	A person who believes in one God.
What do Christians accept about God?	Ultimately that He is a mystery and cannot fully be understood.



Week 3

Question	Answer
Define the term 'miracle'.	An event that appears unexplainable by the law of nature so is thought to be God.
Describe the miracle of Jesus feeding the 5000.	Jesus turned 5 loaves and 3 pieces of fish into enough food to feed 5000 people.
Describe the three types of miracle of Jesus calming the storm.	Jesus was taken out on a fisherman's boat and fell asleep. A storm came and threatened their lives. Jesus woke up and stopped the storm!



Week 4

Question	Answer
Define the term 'Parable'.	A story with meaning. E.g. The tortoise and the hare.
Which two people walked past the injured man, leaving him to die?	A Jewish Priest and a Levite (a priest's helper).
What message does Jesus want people to learn from the Good Samaritan?	'Love thy neighbour'.



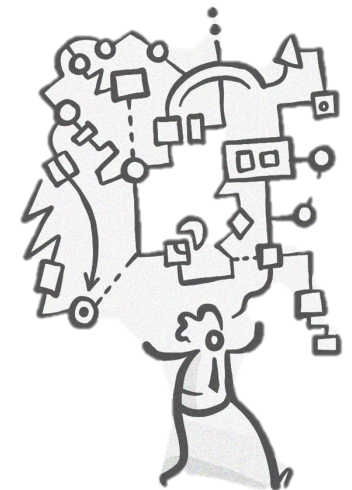
Week 5

Question	Answer
Define the Holy Trinity.	The three parts of God; The father, the Son and the Holy Spirit.
Define the term 'miracle'.	An event that appears unexplainable by the law of nature so is thought to be God.
Define the term 'parable'.	A story with meaning. E.g. The tortoise and the hare.



Week 6

Masters of recall quiz



Topic 2 Technology | Spanish |

Week 1

Question	Answer
What does 'saco fotos' mean?	I take photos
What does 'hablo por Facetime' mean?	I speak on Facetime
What does 'Mando SMS' mean?	I send texts (SMS messages)
What does 'Leo mis SMS' mean?	I read my texts (SMS messages)
What does 'Chateo con mis amigos' mean?	I chat with my friends

Week 2

Question	Answer
What does the time phrase 'todos los días' mean?	Every day
What does the time phrase 'cada día' mean?	Every day
What does the time phrase 'a veces' mean?	Sometimes
What does the time phrase 'dos o tres veces a la semana' mean?	Two or three times a week
What does the time phrase 'from time to time' mean?	De vez en cuando

Week 3

Question	Answer
Translate 'Sometimes I download apps'	A veces descargo aplicaciones
Translate 'De vez en cuando mando SMS'	From time to time I send texts
Translate 'Nunca hablo por Facetime'	I never speak on Facetime
Translate 'A veces descargo canciones'	Sometimes I download songs

Week 4

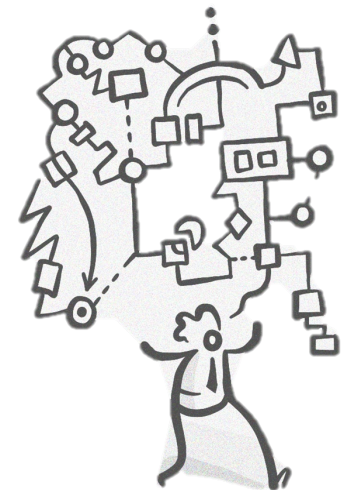
Question	Answer
Translate 'voy a comprar'	I am going to buy
Translate 'vamos a comprar'	We are going to buy
Translate 'voy a descargar'	I am going to download
Translate 'vamos a descargar'	We are going to download
Translate 'voy a usar'	I am going to use

Week 5

Question	Answer
Translate 'I am going to use'	Voy a usar
Translate 'We are going to use'	Vamos a usar
Translate 'I am going to download'	Voy a descargar
Translate 'I am going to buy'	Voy a comprar
Translate 'I am going to buy a new mobile phone'	Voy a comprar nuevo móvil

Week 6

Masters of recall quiz



Topic 2 Technology/ Topic 3 Food and mealtimes | Spanish |

Week 1

Question	Answer
What is a cognate?	A word that looks or sounds like the English (eg normalmente = normally)
Translate 'La música pop'	Pop music
Translate 'La música clásica'	Classical music
Translate 'El rock'	Rock music
.Translate 'La música electronica'	Electronic music

Week 2

Question	Answer
Translate 'I love'	Me encanta/ Me chifla
Translate 'I am interested in'	Me interesa
Translate 'I really like'	Me gusta mucho
Translate 'I don't like'	No me gusta
.Translate 'I hate'	Odio/ Detesto

Week 3

Question	Answer
Translate 'la letra'	The lyrics
Translate 'el ritmo'	The rhythm
Translate 'la melodía'	The tune
Translate 'la cantante'	The singer
.Translate 'el grupo'	The group/ The band

Week 4

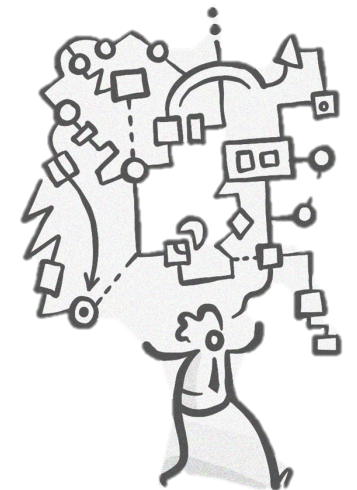
Question	Answer
Translate 'es mejor'	Is better
Translate 'es peor'	Is worse
Translate 'es más interesante que...'	Is more interesting than
Translate 'es menos interesante que...'	Is less interesting than
.Translate 'es más divertido que...'	Is funnier than

Week 5

Question	Answer
Translate 'hay que'	You must
Translate 'se debe'	You should
Translate 'tengo que'	I have to
Translate 'se debe comer'	You should eat
.Translate 'hay que comer'	You must eat

Week 6

Masters of recall
quiz




Topic 2 Nature Phone Case / Art Deco Clock | Technology (Textiles / Design)

Week 1

Question	Answer
Name 3 safety rules for the Textiles room	<ul style="list-style-type: none"> Do not run Tie hair back Only 1 person on a sewing machine at once Do not lean over others while working Remain seated while using pins and needles. Carry scissors pointing towards the floor.
Name 3 safety rules in the Design Technology Room	<ul style="list-style-type: none"> Do not run Wear an apron Tie your hair up Wear PPE Be aware of your surroundings 1 person on a machine at any one time. Bags and coats in the storage area

Week 2

Question	Answer
Why is it important to plan out a design before you begin construction ?	To ensure that you have worked out if the design will actually work/ fit/ is accurate before using expensive materials that could then be wasted. To ensure you do not waste time and effort on a design that is unfit for purpose.
What is a specification ?	A list of things that a design must have/ include.
What does the yellow line on the floor in the workshop tell us?	This is the area where 1 person can stand while the machine is in operation.
What are the following safety symbols for? 	Ear Protection Protective Gloves Face Protection Eye Protection Dust Mask/ Protection




Week 3

Question	Answer
What are the 5 stages in the design process?	<ul style="list-style-type: none"> Imagine Plan Design Improve Feedback
What are the names of the 3 hand stitching techniques you have learnt?	<ul style="list-style-type: none"> Back stitch Running Stitch Cross Stitch
What is CAD?	Computer Aided Design
What is CAM?	Computer Aided Manufacture

Week 4

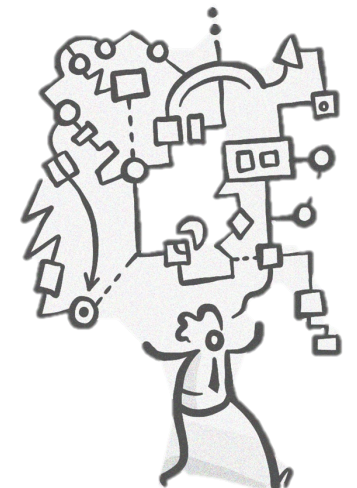
Question	Answer
What is the difference between the back stitch and the running stitch?	The running stitch is often a weaker stitch. It has gaps between the stitches. A back stitch is where the thread connects together to form a single running line. This leaves a stronger stitch as there are twice as many stitches in the same amount of space. . In both stitches the size and length of each stitch should be consistent to achieve a high standard.
Why is it important to conduct existing product research?	So that we are aware of what is already available. this can inform design but will also prevent copy right / plagiarism.
Why do we complete a mood board?	This is a quick way of gathering vast amounts of information / ideas which we can then use to help us understand the product, target market or design limitations before starting our own design.

Week 5

Question	Answer
What is meant by applique?	Stitching one piece of material to another. Applique is a needlework technique in which one or more pieces of fabric are attached to a larger background fabric to create pictures or patterns.
Name the following symbol / button from 2D design 	Select This is the select tool. It allows you to click on drawn objects. Once you have clicked on them, they will become highlighted and have yellow boxes around them
Name the following symbol / button from 2D design 	Line Tool This tool adds lines to your page. You can adjust the length and width of the line.
Name the following symbol / button from 2D design 	Grid This button controls the grid on the page. At the moment the dots are set to be 10mm (1cm) apart.

Week 6

Masters of recall quiz



Topic 2 Nature Phone Case / Art Deco Clock | Technology (Textiles / Design)

Week 1

Question	Answer
What is meant by embellishment?	a decorative detail or feature added to something to make it more attractive
What 5 things must your initial design include?	Design showing the front and back. Fastening Choice Colour Materials Annotations showing the different shapes and material choice.
What does Contour mean in 2D design?	Contouring is when you create a stencil out of your image, leaving only the cut lines.
What does Vectorise mean in 2D design	Vectorising an image makes the image simple and black and white. This removes any blurry parts of the image that the cutter can't use.

Week 2

Question	Answer
How do you control the speed on your sewing machine?	With the foot pedal
What part of the machine holds your fabric and helps to pull the fabric forward as you sew?	The foot
How many piece of thread should be showing before starting to sew.	Two
What shapes do we usually find within Art Deco?	Triangles, Circles, Wings, Squares
What colours do we usually find within Art Deco?	Gold, Yellows, Silvers, Black, Red

Week 3

Question	Answer
Why is important to create a pattern for your product.	This will allow you to make a stencil for all the pieces out of paper before cutting out of fabric. Any mistakes can be rectified without wasting expensive material.
What is a name for your paper model	A working prototype.
Your clock should be 3D. How will you ensure your design is 3D if we are using the lazer cutter?	The design should have several layers of Art Deco shapes that will be fastened together to create a 3D structure.

Week 4

Question	Answer
How do we fasten the felt together before sewing?	Glue them in place
What would we use if we were not using felt but maybe cotton?	Pins
How big must the Contour path size be for each of your shapes in 2D design?	Maximum of 1mm. Ideally 0.5mm
What do need to ensure we do to the colour when we are vectorising any images off the internet?	Make them Monochrome and scale down the number of colours.
What will this scaling down, do to the image quality?	It will make it less accurate and detailed.

Week 5

Question	Answer
Why is it important to leave a boarder around your pattern pieces when you cut them out.	This leaves a hem which will hold the stitch. if you stitch it without a hem, it will be smaller than you intended.
How big is this boarder?	1 cm.
Do you sew the hem on the inside or outside?	Inside, so it will be sewn inside out.
What do we need to make sure we do to the colour of the lines before sending it to be cut?	Black lines for Cutting and red lines for engraving.
What do we need to ensure we do with each line / shape before we send them to be cut?	All lines need to be touching with no gaps. Shapes need to be checked to ensure they are the correct size.

Week 6

Masters of recall quiz

